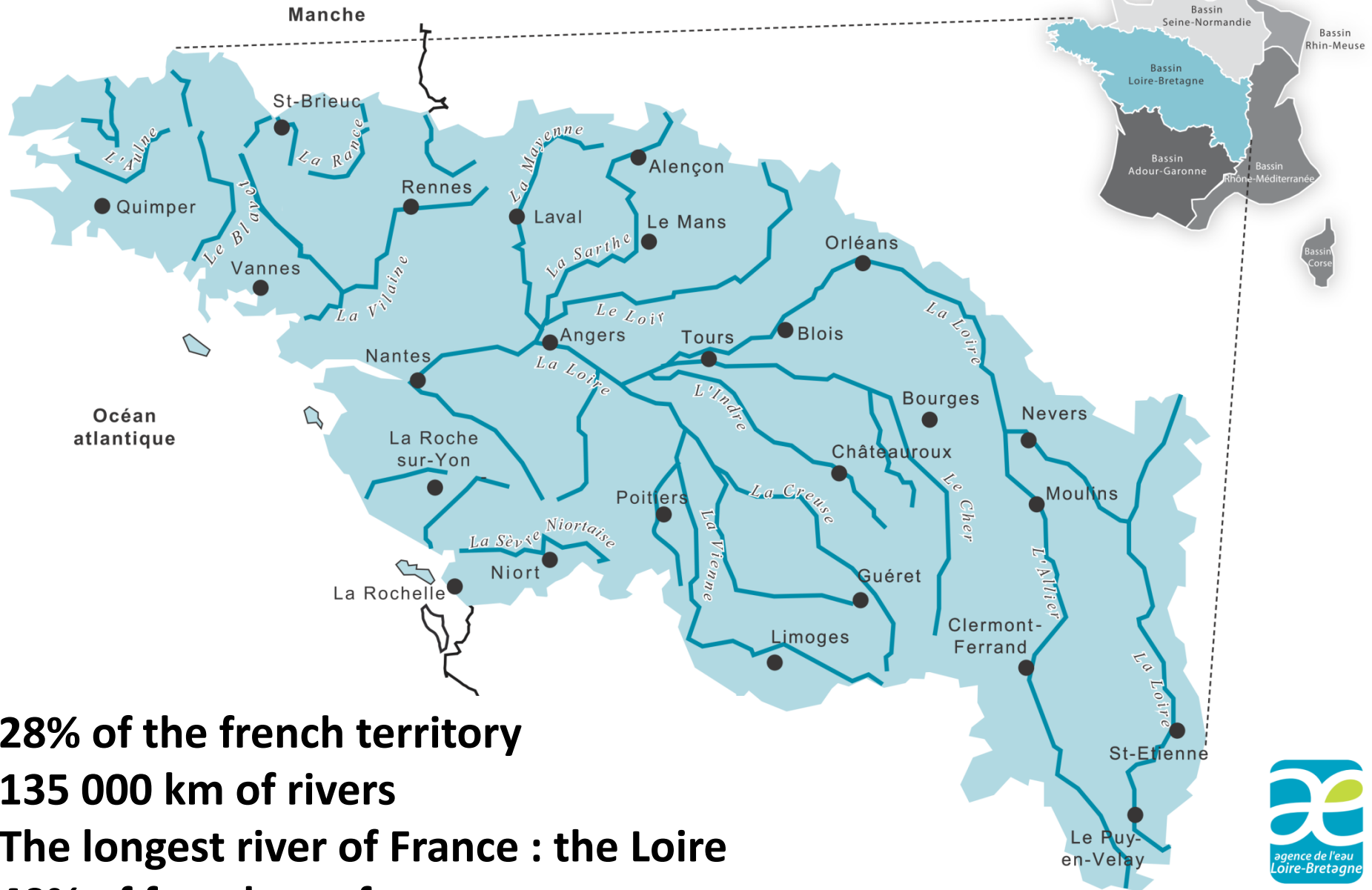


The Loire-Brittany Basin

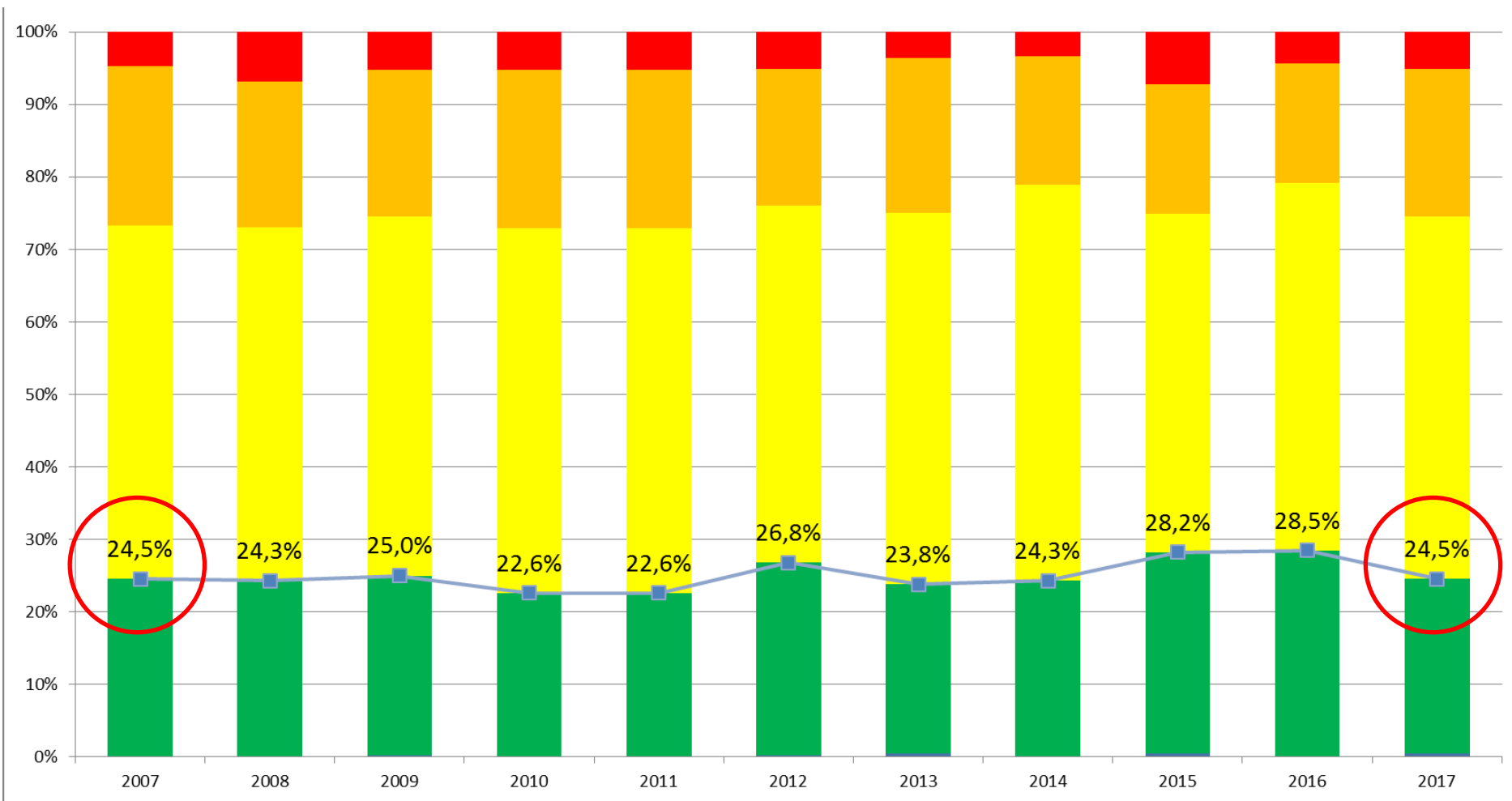
Le bassin Loire-Bretagne



28% of the french territory
135 000 km of rivers
The longest river of France : the Loire
40% of french sea front

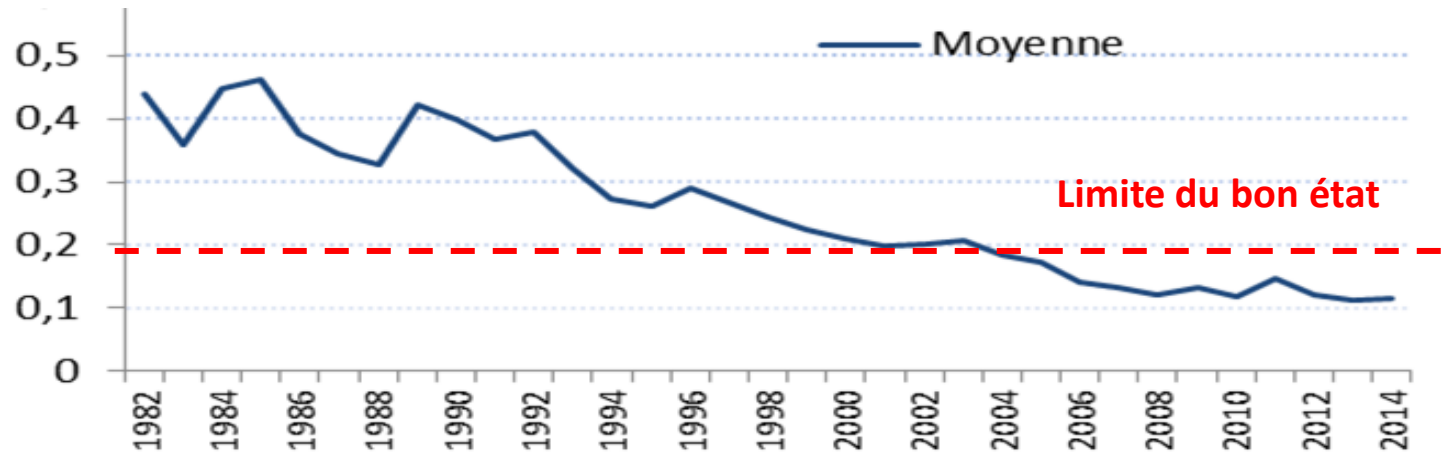
Ecological status of rivers (with steady rule)

Etat écologique des cours d'eau (à règle constante)

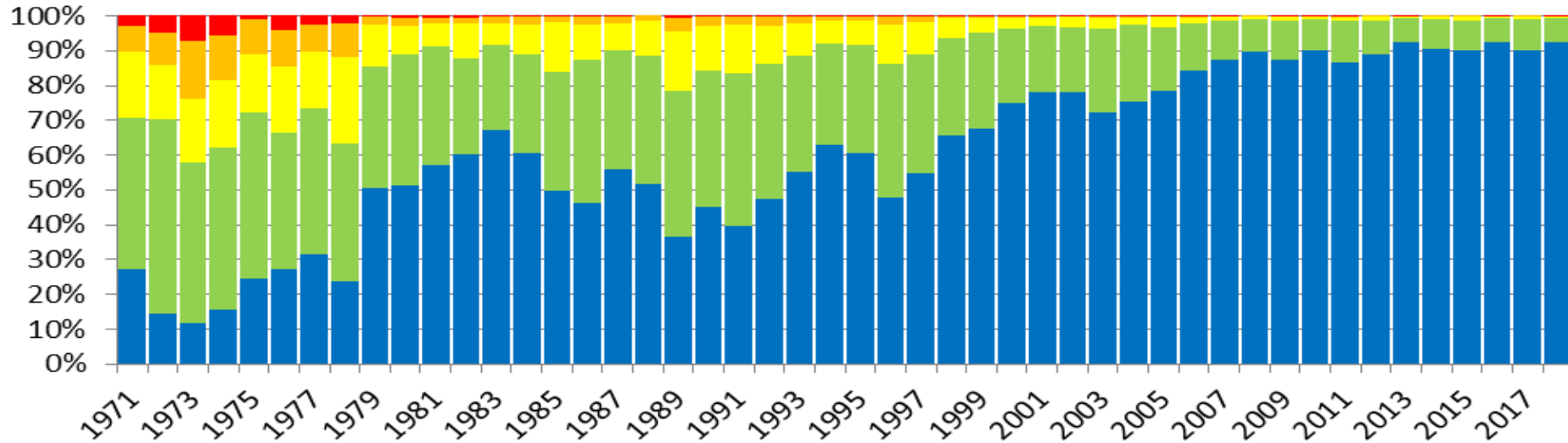


stabilité / stability

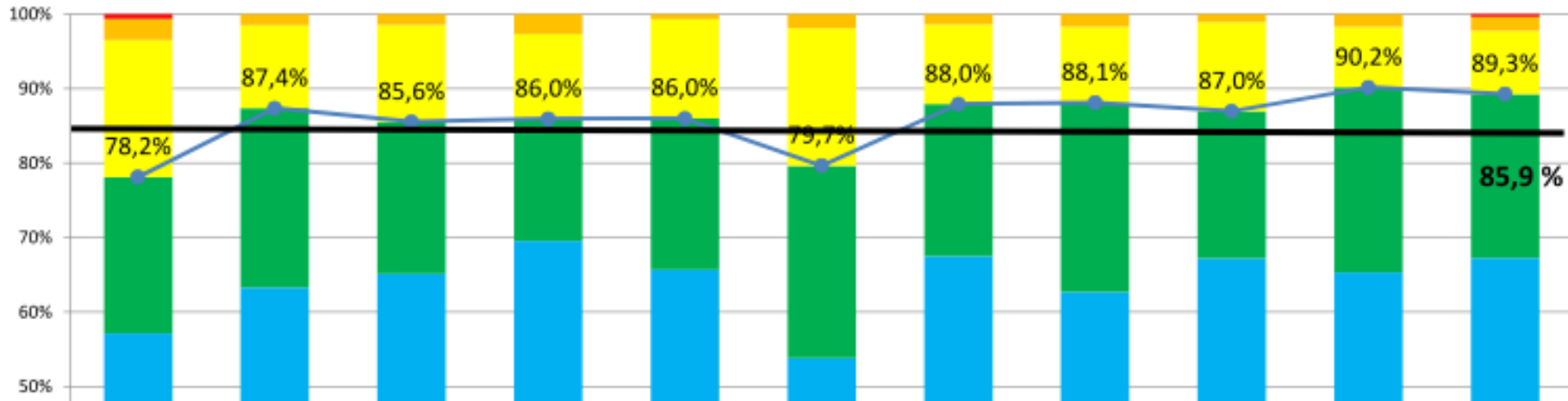
Concentrations en Phosphore total Nutrient conditions (Phosphorus)



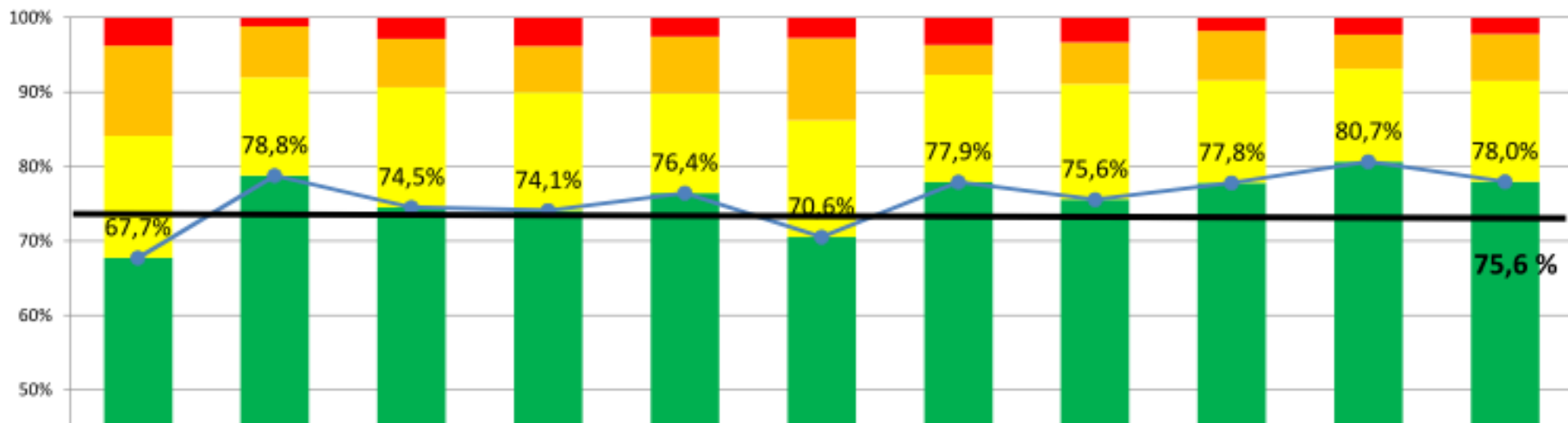
Demande biochimique en oxygène (DBO5) Oxygenation conditions



Indice Biologique Global Normalisé (IBGN) Standardized global biological index



Index multimétrique des macro-invertébrés (I2M2) Macroinvertebrate-based multimetric index



Echéance 2027, et au-delà... Deadline 2027 and beyond...

