

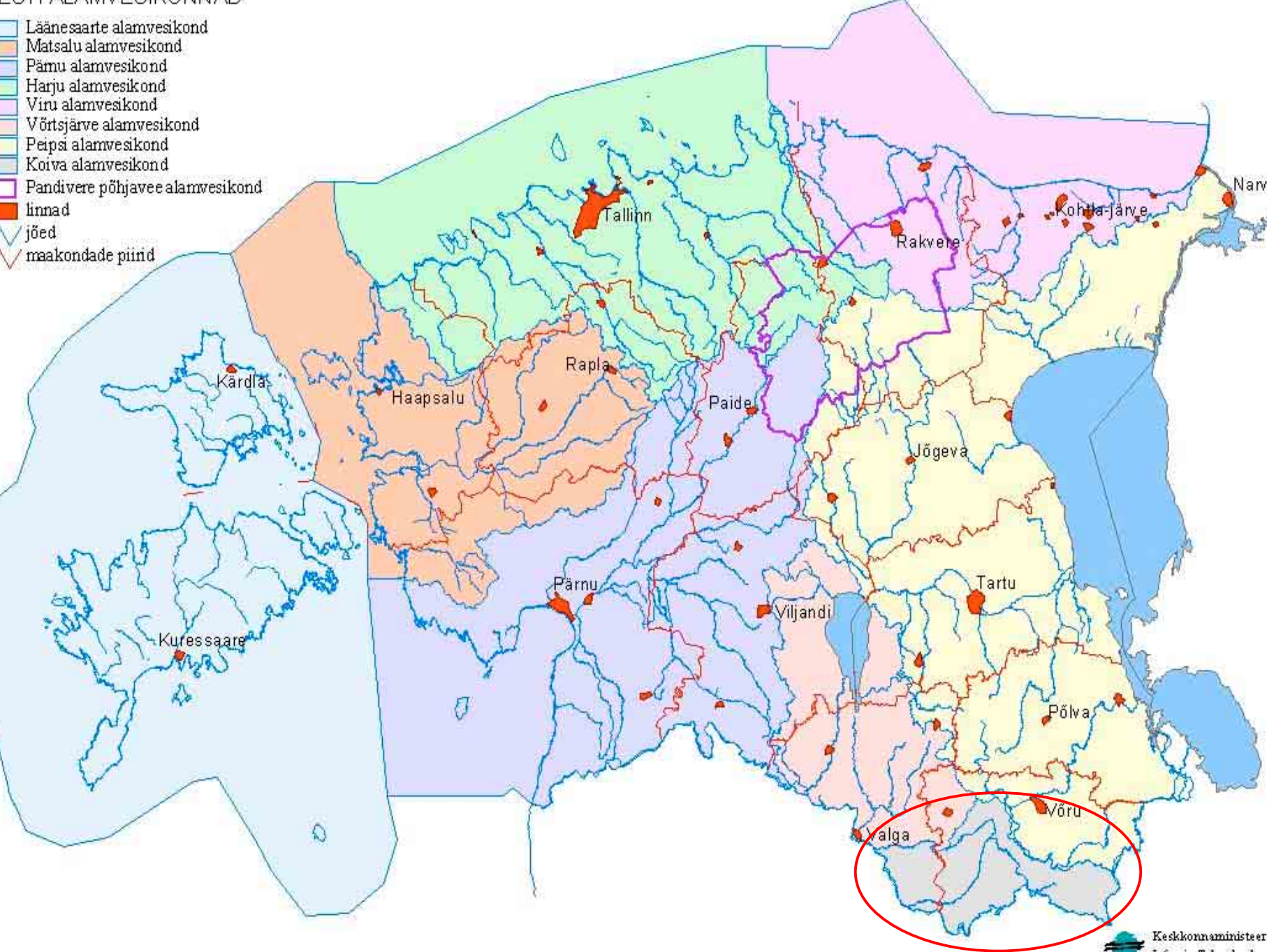
Koiva watershed water management plan

Pricing and cost- recovery assessment

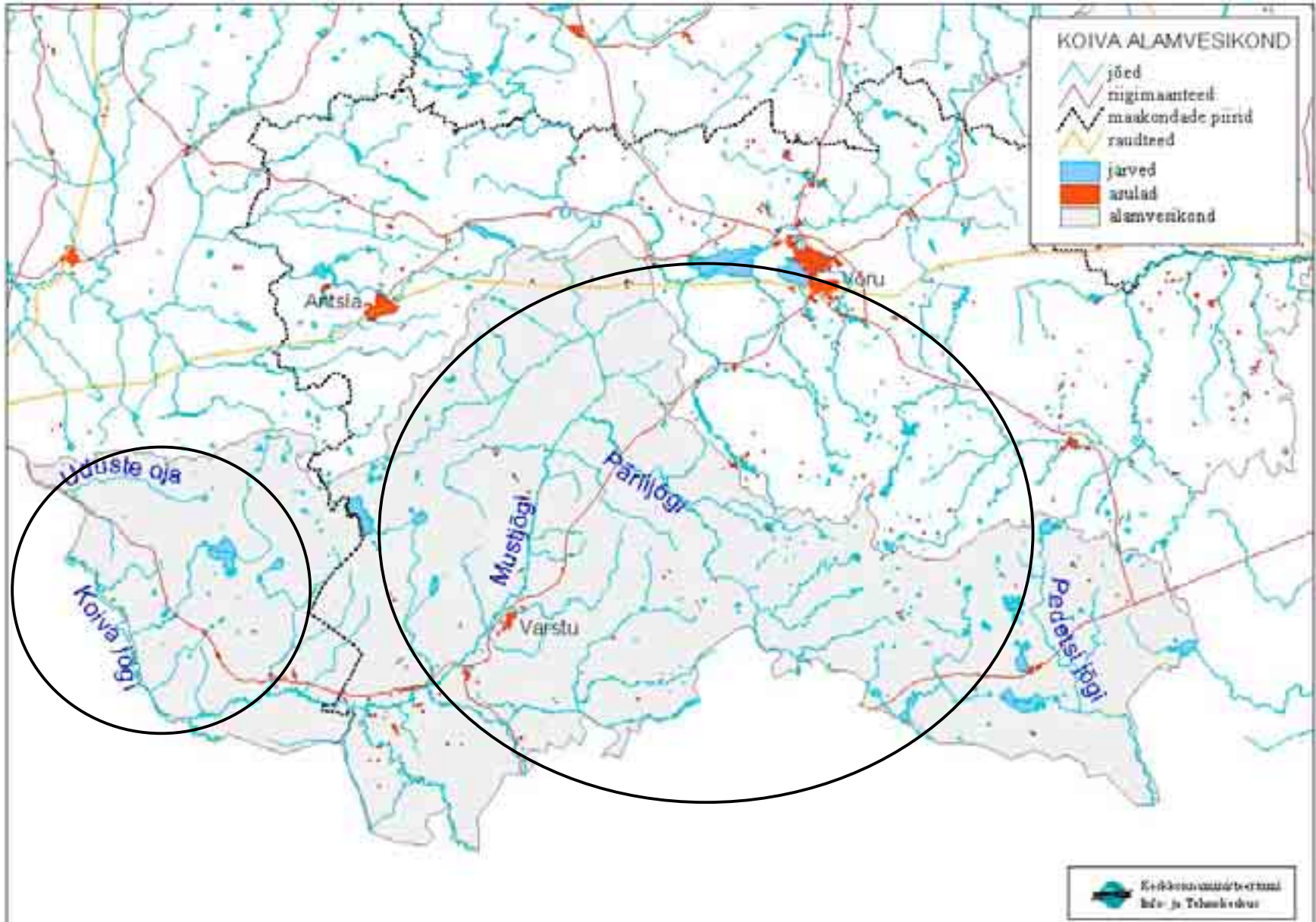
Mariina Hiiob

Võru County Environmental Department

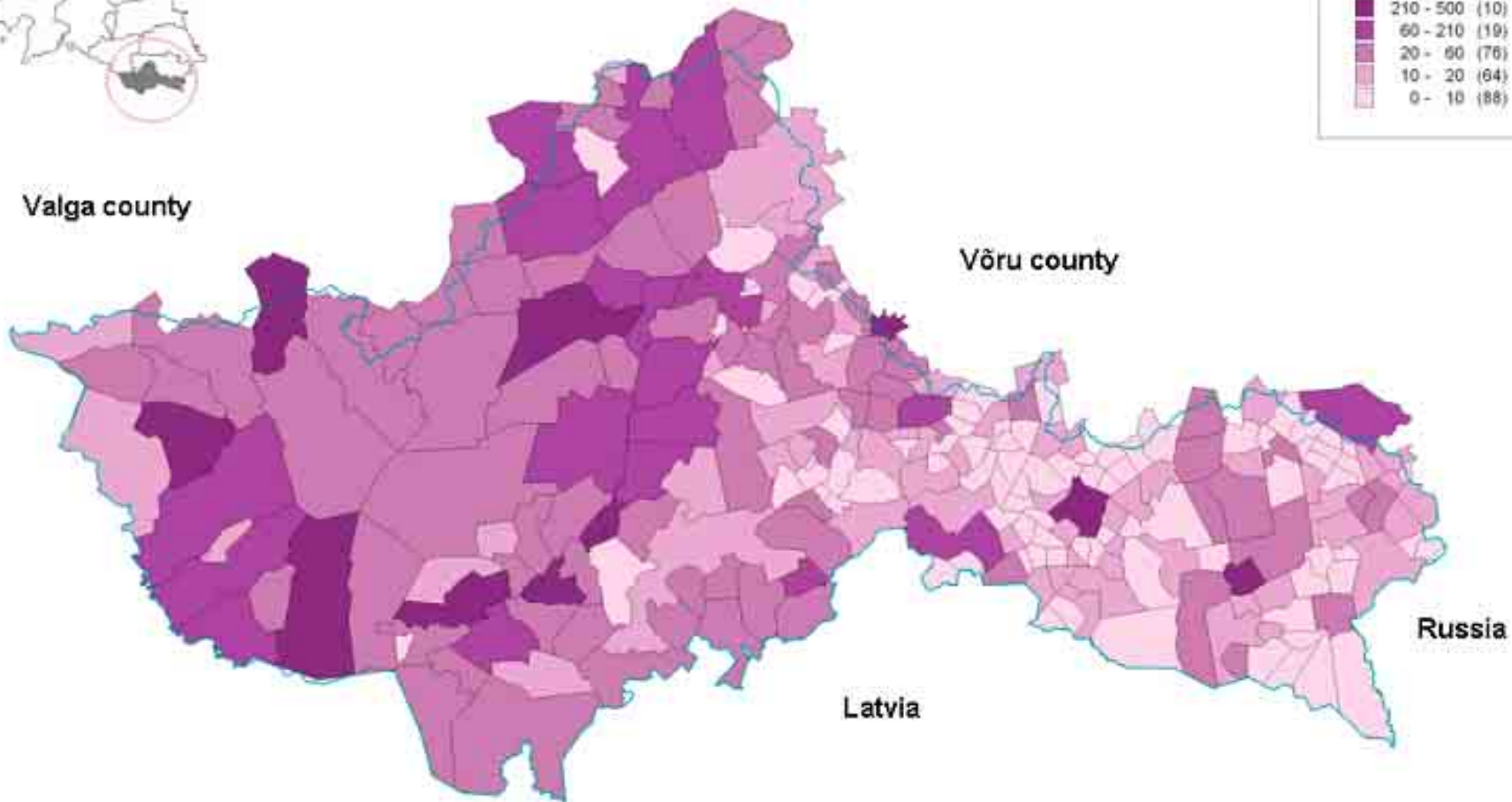
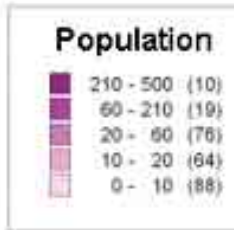
- Läänesaarte alamvesikond
- Matsalu alamvesikond
- Pärnu alamvesikond
- Harju alamvesikond
- Viru alamvesikond
- Võrtsjärve alamvesikond
- Peipsi alamvesikond
- Koiva alamvesikond
- Pandivere põhjavee alamvesikond
- linnad
- jõed
- maakondade piirid



Koiva Watershed – 1330 km²



Koiva watershed population



The beginning - 2001

- collect and complete the existing data
- databases and maps
- local people and the knowledge of water protection



Economic analysis

PURPOSE

- most economic possibilities in order to achieve a good condition of a river basin
- form cost-based price of water services

ATTENTION

- water consumer
 - industrial
 - agricultural
 - domestic
- main measures
- water price policy

Water consumer

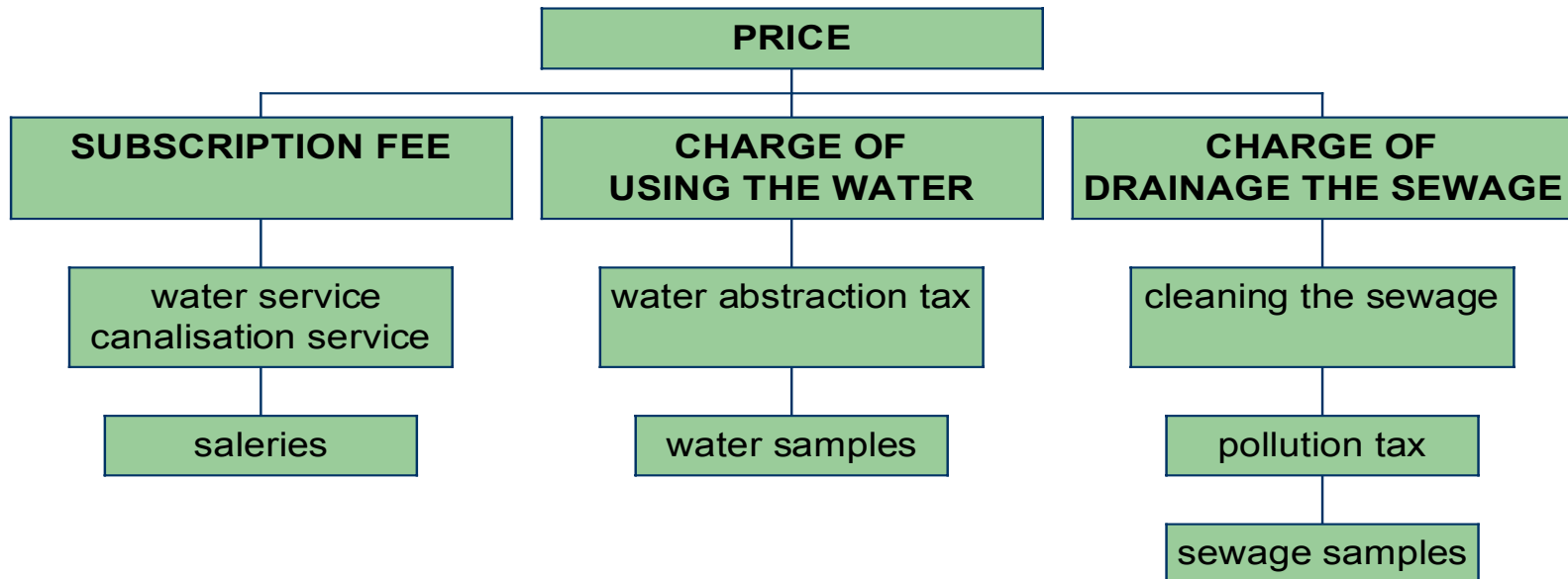
- very few industrial concerns
- the main water consumer branch of economy is farming – 40 000 m³/year
- in 2002 the used amount of water in Koiva watershed was about 180 000 m³ – 82% was used for domestic purpose
- water companies and local municipalities – water price policy and the amount of investments

The price of the water

- the amount of necessary investments
- social policy aspect
- lack of information > appreciation
- water price and water quality
- water price policy purpose cost-covering water services
- inform local people:
 - expenses
 - investments

The water price for domestic users

Chart Title



Water price in Koiva watershed

	1m ³ water EEK	1m ³ water EURO	1m ³ canalisation EEK	1m ³ canalisation EURO
domestic user	7,03	0,45	5,30	0,34
enterprise	7,98	0,51	7,20	0,46
difference	0,95	0,06	1,9	0,12

Current situation

- residents' average ability to pay the service was under 3% of family member average monthly disposable income (124 euro)
- actual price policy « investments in water management and residents social situation

donation-system

which considers all the concerned parties and enables to start implement the cost-covering water service

Income – 2002

COURSE	EEK	EURO
water abstraction taxe	92 969	5 959
pollution tax	35 256	2 260
service	578 583	37 089

All together 45 308 EURO

NOW

- too many small water companies, which
- don't have ability to invest
- higher all-in costs

offered service more
EXPENSIVE

BENEFICIAL

- one water-company
- lower general costs
- increases the business efficiency
- better opportunities to invest

can offer a good service in
LOWER PRICES