



## AUTONOMOUS BINATIONAL AUTHORITY OF LAKE TITICACA

30TH ANNIVERSARY OF INBO'S WORLD GENERAL ASSEMBLY



Water resources and climate change: how can watershed management become more resilient?





# The Binational Autonomous Authority of Lake Titicaca as a mechanism for water resource management between Peru and Bolivia

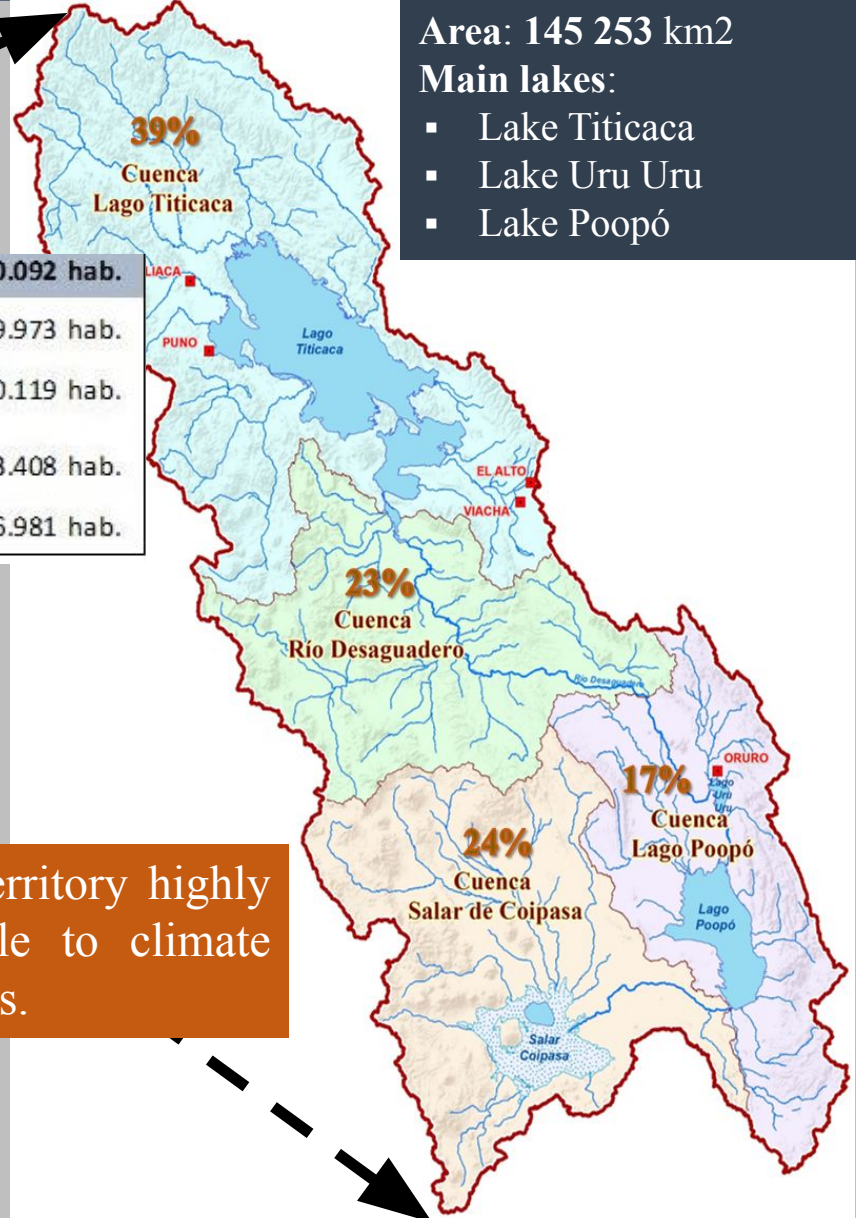
**Juan José Ocola Salazar**  
Chief Executive Officer

Bordeaux, 7 to 10 September 2024

# Scope of intervention of the ALT:



<b>Población Total:</b>	<b>3'100.092 hab.</b>
 Población Perú:	1'069.973 hab.
 Población Bolivia:	2'030.119 hab.
 Población Urbana:	1'933.408 hab.
 Población Rural:	1'146.981 hab.



Area: 145 253 km<sup>2</sup>

Main lakes:

- Lake Titicaca
- Lake Uru Uru
- Lake Poopó

It is a territory highly vulnerable to climate variations.



# MAIN CHALLENGES:

1. Water Security based on Climate Change Adaptation
2. Contamination and eutrophication of water resources, mainly of the Titicaca, Uru Uru and Poopó lakes.
3. Restore stocks of native fishery resources.
4. Raising public awareness of the importance of caring for water quality and natural resources.



Inner Bay  
(City of Puno)

Lake Titicaca

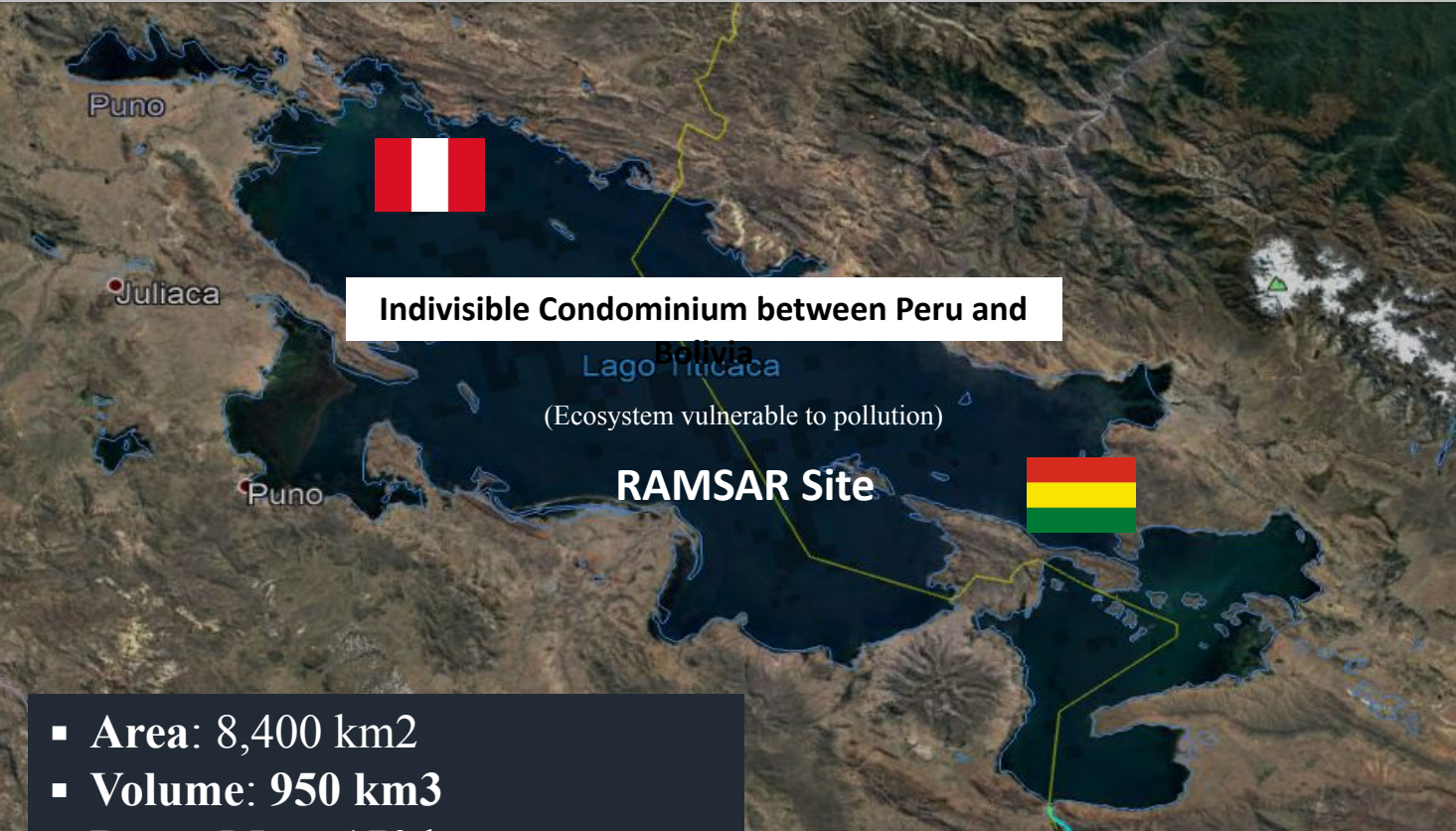
Yunguyo Bay

Cohana Bay - Bolivia

 Pollution from municipal waste water discharges

 Pollution from fish farming

# Lake Titicaca: the hydrological heart of the TDPS



- Area: 8,400 km<sup>2</sup>
- Volume: 950 km<sup>3</sup>
- Long. Max: 170 km
- Max width: 70 km
- Max depth: 272 m
- Altitude: 3.809 m.a.s.l.
- Total: 97,000 hectares

COUNTRY	P. Urbana	P. Rural	TOTAL
Bolivia	964.654	318.589	1 283.243
Peru	603.518	466.455	1 069.973
<b>TOTAL</b>	<b>1 568.173</b>	<b>785.044</b>	<b>2 353.216</b>

- Created in 1996, with **28 years** of institutional life.
- **Autonomous body**
- **Public international law body**
- Depends on the Ministries of Foreign Affairs of Peru and Bolivia.



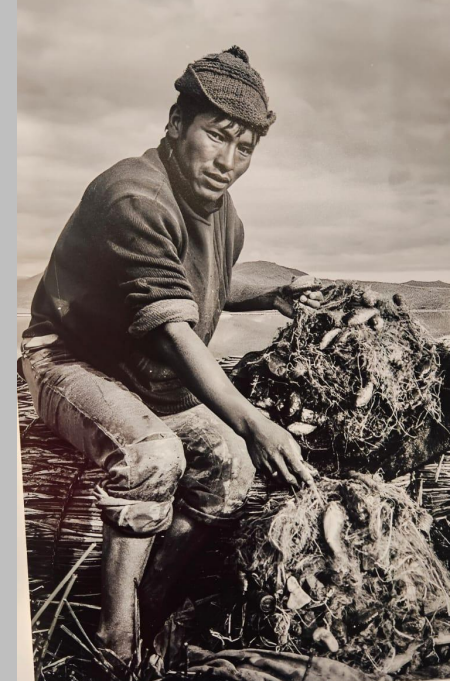
# The role of the Binational Autonomous Authority of Lake Titicaca:

- It contributes to the management of **water** and **hydrobiological resources** and environmental management in the TDPS.
- Contribute to sustainable development in the TDPS area; based on the **rational use of natural resources: water, biodiversity and soil.**
- It contributes to the strengthening of **binational integration ties between Peru and Bolivia.**
- Contribute to knowledge, prevention and adaptation to climate change.



# TLA and bi-national cooperation:

- Construction and operation of the Lake Titicaca **regulation project**
- Binational monitoring of **fish biomass** in Lake Titicaca.
- Dredging of 68 km of the Desaguadero River
- Binational **water quality** monitoring of Lake Titicaca.
- Binational **diagnosis of fisheries** and aquaculture in the context of the TDPS.
- It trains and raises awareness among Peruvian and Bolivian



## ALT's response to priority challenges:

---

- It monitors the **levels of Lake Titicaca** and assesses the impact on water security and the ecosystem.
- Binational observatory with a **robust and modern information system** for decision-making.
- It supports the **operation of laboratories** for the **artificial propagation** of native fish.
- It carries out **studies on pollution and eutrophication** of water resources.
- Inventory of pollutant sources.
- It coordinates inter-institutionally on resources for the achievement of common objectives in the TDPS.
- Etc.





Thank you