



Australian Government



Murray–  
Darling  
Basin  
Authority

# Case Study: The Murray–Darling Basin & Water Policy

12<sup>th</sup> World General Assembly of INBO - 2024

Wednesday 9 October 2024



Covers an area of more than a million square kilometres



7,300 irrigated agriculture businesses



Home to 2.3 million Australians



16 internationally recognised and protected wetlands

The Murray–Darling Basin is Australia's largest and most complex river system



Agriculture output worth more than \$22 billion each year



More than 40 First Nations



120 species of native and migratory birds

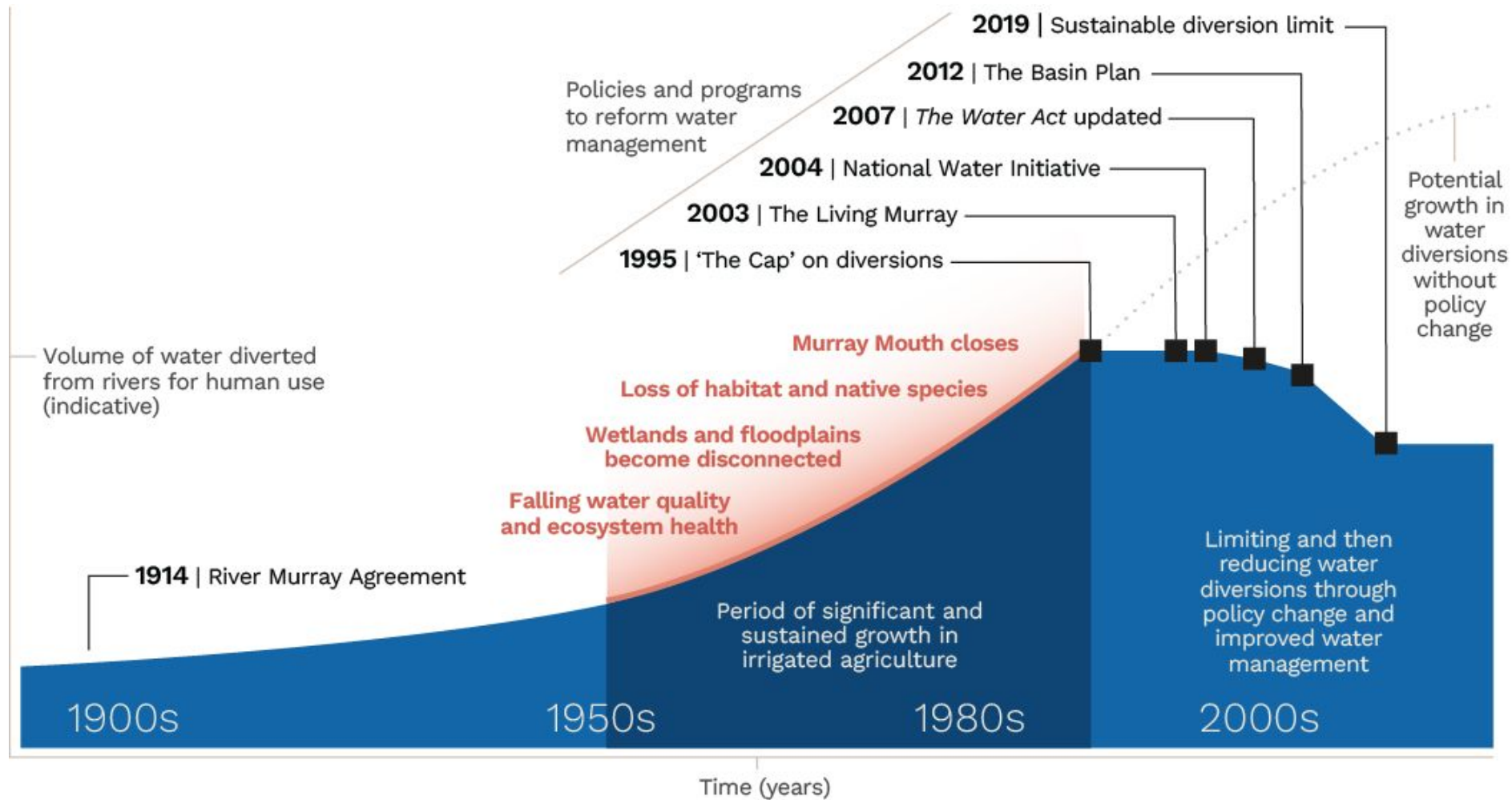


Tourism industry worth \$11 billion each year



More than 50 species of native fish

# Overview of water reform in the Basin





*Rivers, for generations.*

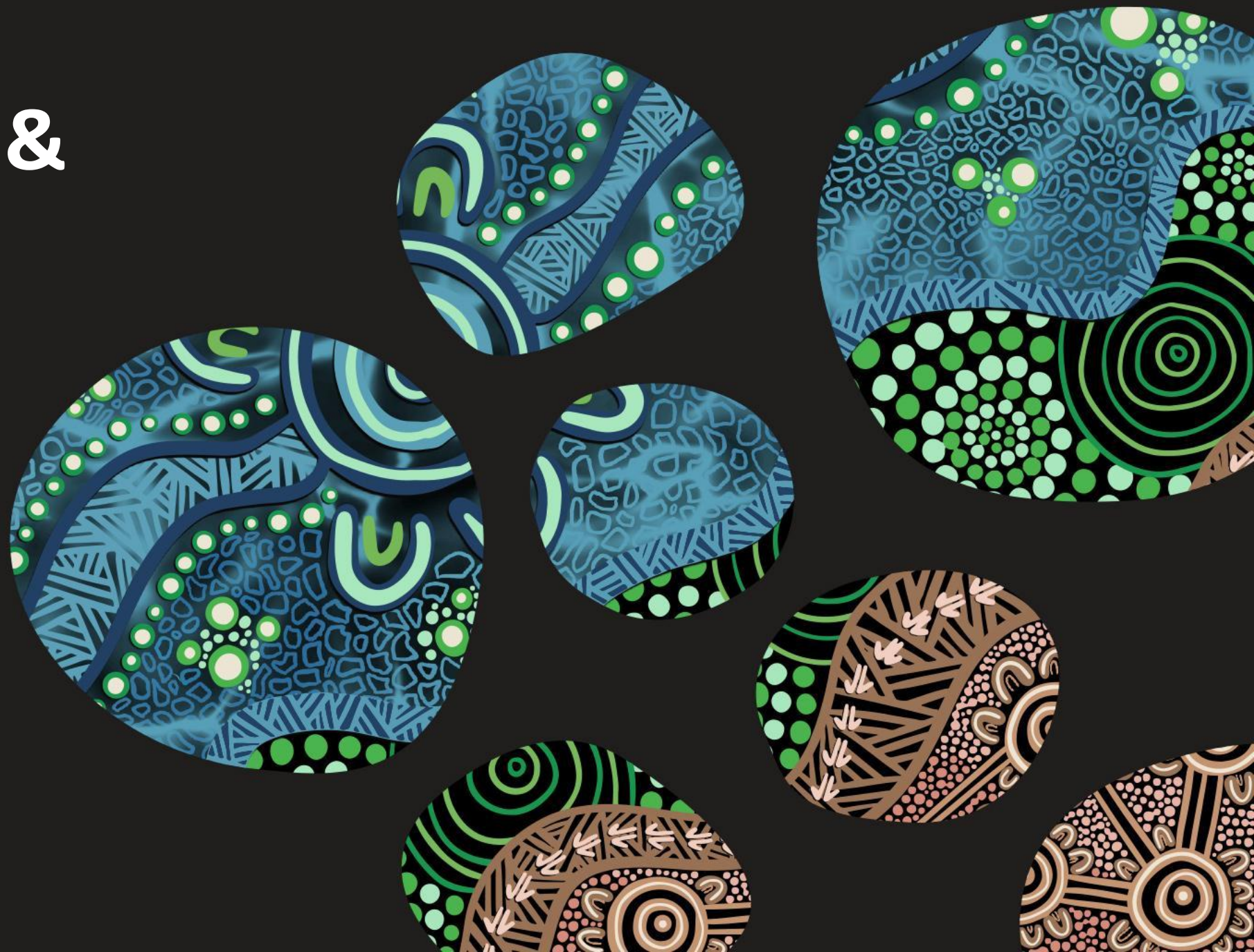
# Learning from First Nations people

- First Nations people have a long-term connection and sophisticated ways of managing water and Country.
- Working respectfully with First Nations people's science and knowledge can respond to their interests and Basin management outcomes.
- Progressing First Nations people's water rights and interests in the Basin using Free, Prior and Informed Consent (FPIC) and Indigenous Cultural and Intellectual Property (ICIP)





# Thank you & Questions



From the artwork *Rivers, for generations*  
by Amy Kilby, Wiradjuri artist