

Towards a good ecological status of water

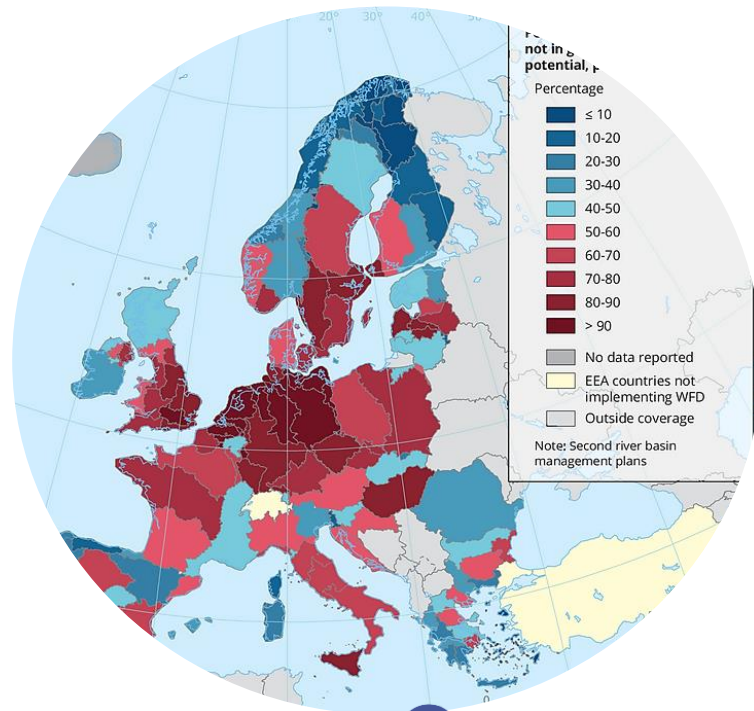
Bernard De Potter

administrator general

president Coordination Committee on Integrated Water Policy

Flanders: a brief situation sketch

- high population pressure, intensive use of space, economic activities and agriculture, historical pollution, insufficient quality of the water when it flows into Flanders, ...
- barely 1/195 surface-WB in good ecological status
- 15/42 ground-WB in good status

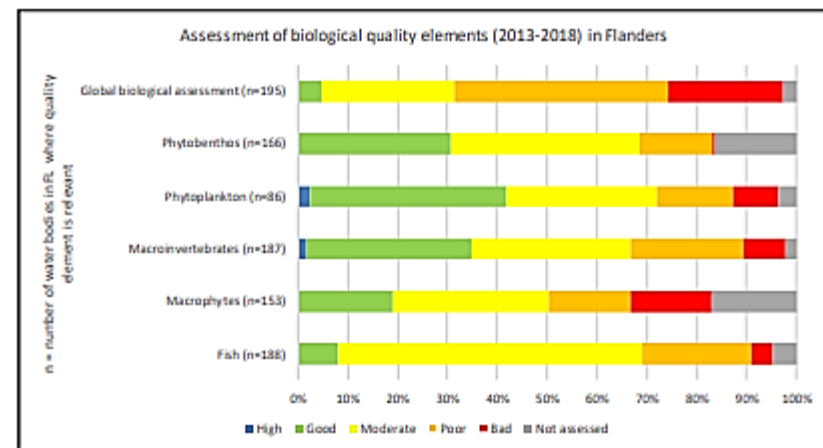


i % water bodies not in good ecological status/potential

i Assessment of groundwater bodies

GWB phreatic regime	chemical status	quantitative status	global assessment	RBD
BLKS 0100 GWL 1M				Meuse
BLKS 0100 GWL 1S				Scheldt
BLKS 0400 GWL 1M				Meuse
BLKS 0400 GWL 1S				Scheldt
BLKS 0600 GWL 1				Scheldt
BLKS 0600 GWL 3				Scheldt
BLKS 1000 GWL 1S				Scheldt
BLKS 1100 GWL 1M				Meuse
BLKS 1100 GWL 1S				Scheldt
CKSL 0200 GWL 1				Scheldt
CKSL 0200 GWL 2				Meuse
CKSL 0200 GWL 1				Meuse
CKSL 0200 GWL 1				Scheldt
CVS 0100 GWL 1				Scheldt
CVS 0100 GWL 1				Scheldt
CVS 0600 GWL 1				Scheldt
CVS 0600 GWL 1				Scheldt
CVS 0600 GWL 1				Scheldt
KPS 0120 GWL 1				Scheldt
KPS 0120 GWL 2	N +		N +	Scheldt
KPS 0120 GWL 1				Scheldt
KPS 0180 GWL 2	N +	N +	N +	Scheldt
KPS 0180 GWL 3	N +		N +	Scheldt
MS 0100 GWL 1				Meuse
MS 0200 GWL 1				Meuse
MS 0200 GWL 2	N +		N +	Meuse
GWB confined regime	chemical status	quantitative status	global assessment	RBD
BLKS 0400 GWL 2M				Meuse
BLKS 0400 GWL 2S				Scheldt
BLKS 0600 GWL 2	N +		N +	Scheldt
BLKS 1000 GWL 2M				Meuse
BLKS 1100 GWL 2M				Scheldt
BLKS 1100 GWL 2S				Scheldt
CVS 0400 GWL 1	N +	N +	N +	Scheldt
CVS 0600 GWL 2	N +		N +	Scheldt
CVS 0600 GWL 2	N +		N +	Scheldt
SS 1000 GWL 1				Scheldt
SS 1000 GWL 2				Scheldt
SS 1300 GWL 1				Scheldt
SS 1300 GWL 2				Scheldt
SS 1300 GWL 3	N +		N +	Scheldt
SS 1300 GWL 4				Scheldt
SS 1300 GWL 5				Scheldt

i Flemish water bodies: assessment of biological quality elements

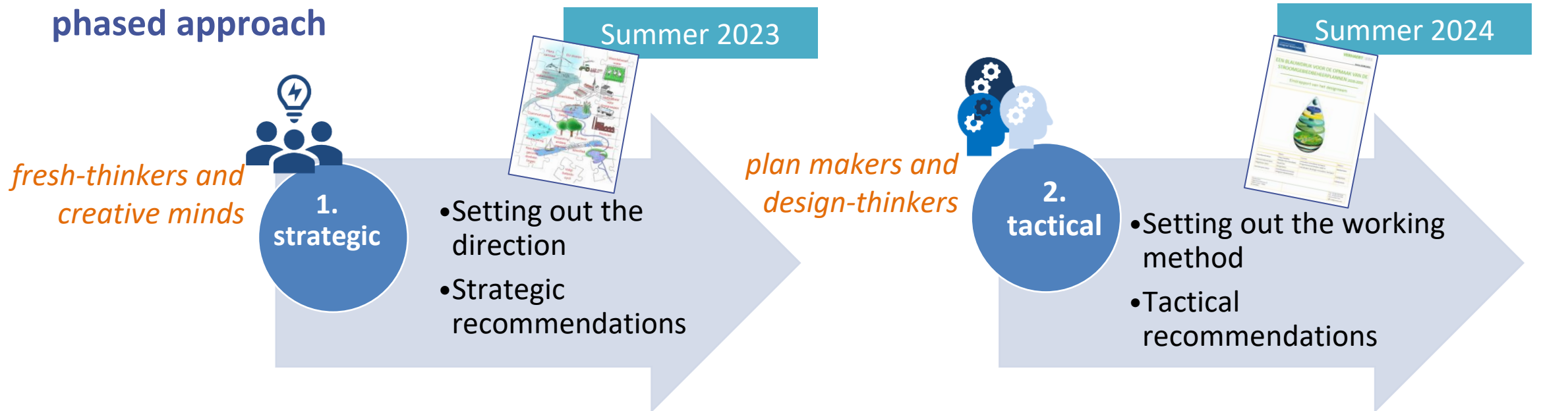


A transition strategy for the RBMP

review the plan design

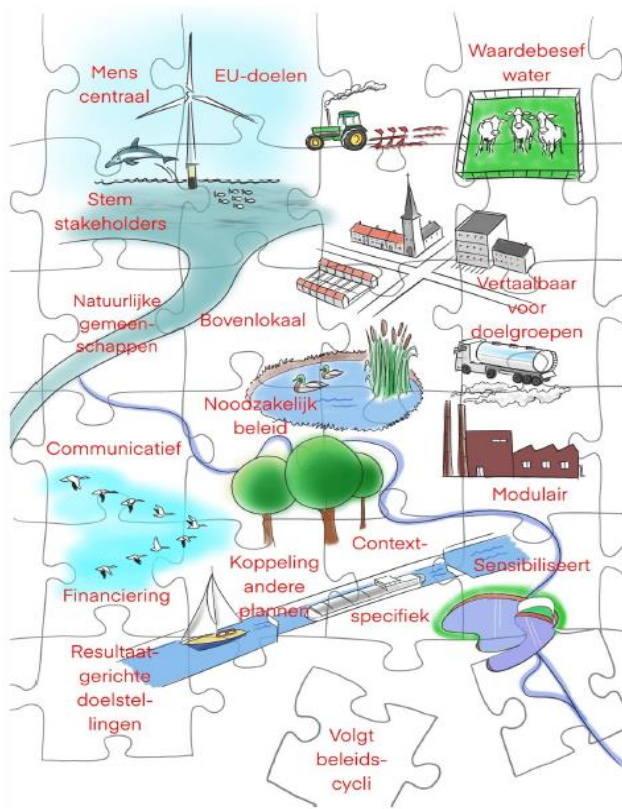
- increase support for measures
- encouraging engagement

phased approach



A view from a fresh perspective

*fresh-thinkers and
creative minds*

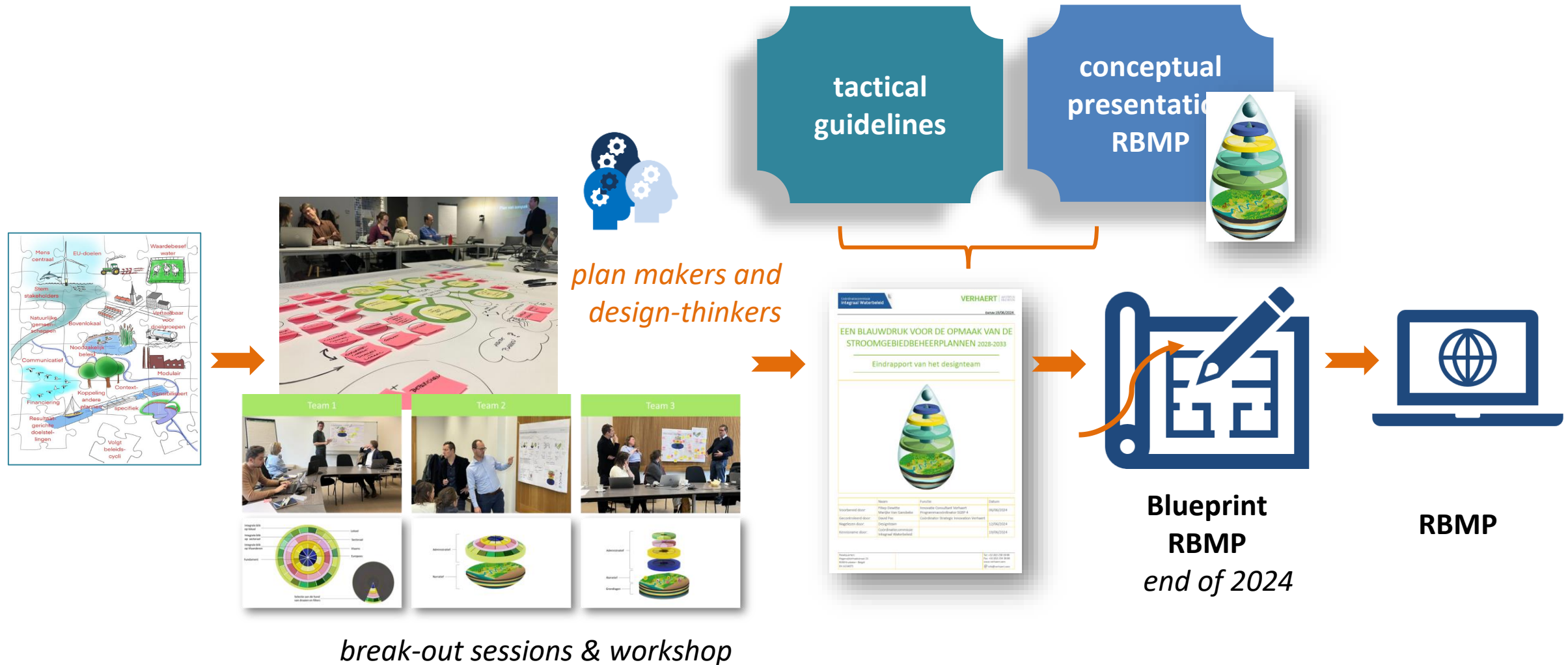


15 strategic recommendations



- Put people at the centre of the water story. A human-centred approach is key to building commitment and adaptability in the quest for healthy water systems.
- Provide information on analysis and methodology required by the European Commission in background documents.
- Set ambitious but achievable targets for water quality, floods and droughts.
- Include socio-psychological expertise in the drafting process, in addition to scientific expertise.
-

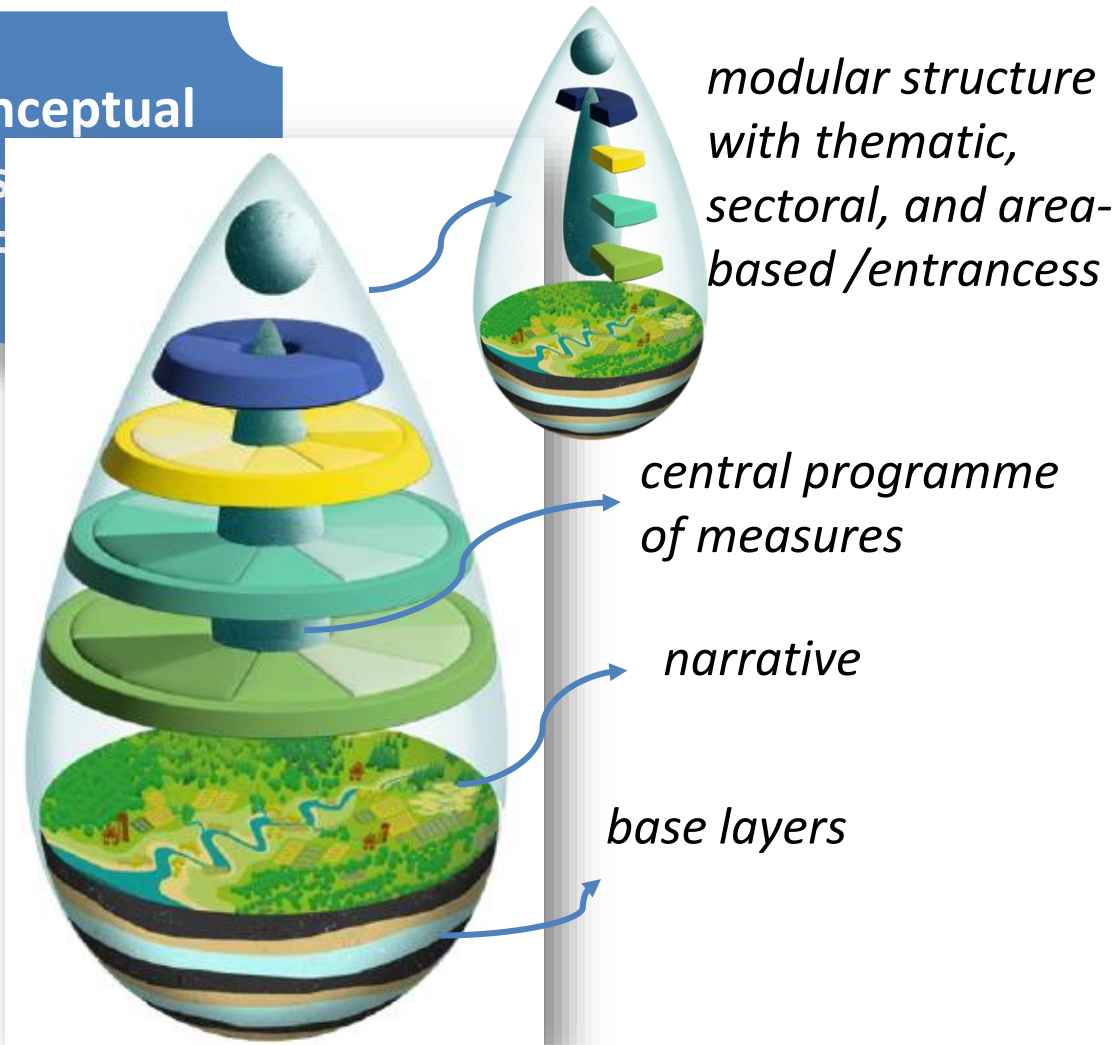
Towards an innovative and workable plan design



Towards an innovative and workable plan design

conceptual

pres



± 40 tactical guidelines

- target setting
- programme of measures
- basin coalitions
- stakeholder engagement
- design of the plan
- resources and commitments
- communication strategy
- innovation and pilot projects

Living lab Herk & Mombeek

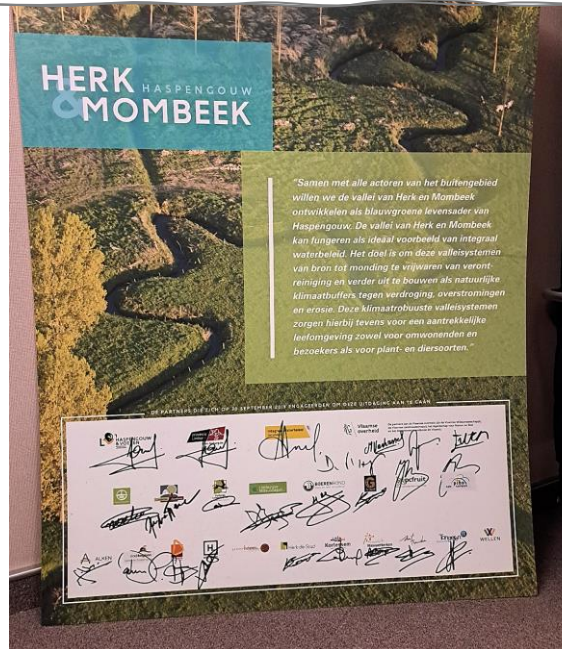
- intensively used agricultural catchment
- faces climate-related challenges (such as droughts, flooding, and water quality issues)

± 40 tactical guidelines

- target setting
- programme of measures
- basin coalitions
- stakeholder engagement
- design of the plan
- resources and commitments
- communication strategy
- innovation and pilot projects

Integraal Waterbeleid
Samen werken aan water

Integrate lessons learned from innovative pilots and demonstration projects.



Living lab Herk & Mombeek

a socially innovative consultation and decision-making process

a supported action programme



Integraal Waterbeleid
Samen werken aan water



Living lab Herk & Mombeek

Water-Oriented Living Labs:

“real-life, water- oriented and demo-type and platform-type environments with a cross-sector nexus approach, which involve and commit multiple stakeholders (including water authorities) and provide a ‘field lab’ to develop, test, and validate a combination of solutions as defined in the WE Vision, which include technologies, their integration as well as combination with new business models and innovative policies based on the value of water”



Towards a 'resilient Dommelland'

Dommel and Warmbeek-Tongelreep river basins in Belgian and Dutch Limburg

- intensive land use (densely built valley)
- climate-related challenges (water scarcity and flooding)
- **cross-border cooperation to make the area more climate-resilient**
- 3 three work packages + sharing knowledge
 - river restoration
 - restoration of the sponge landscape in the upstream area
 - blue-green infrastructure in the village and town centers

