



Autorità di bacino distrettuale delle Alpi Orientali

HIGH-SKILLED PLANNING ABILITY AT WFD'S SERVICE: THE RECENT EXPERIENCES OF EASTERN ALPS RBD

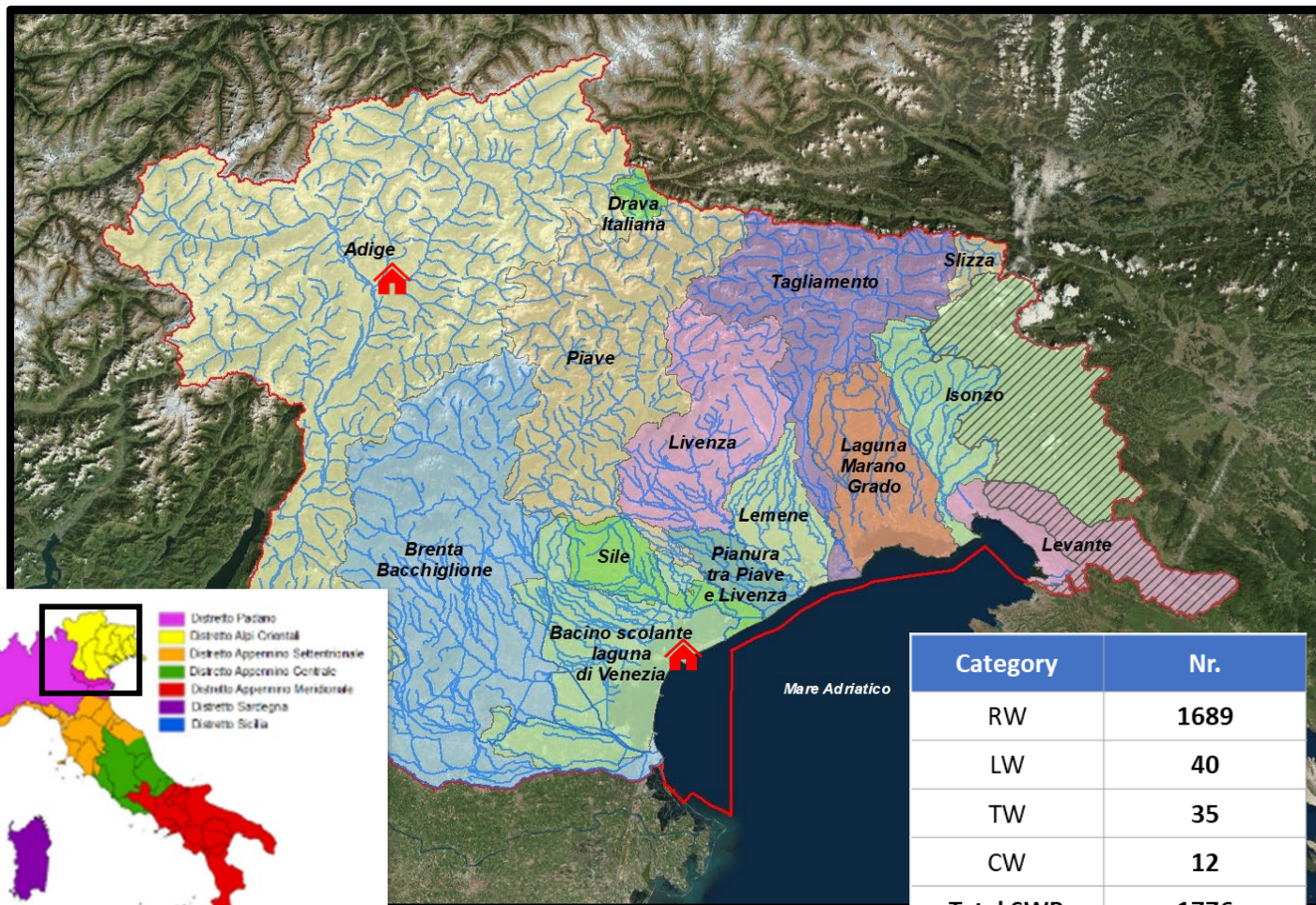
19th "EUROPE-INBO" INTERNATIONAL CONFERENCE
for the Implementation of the European Water Directives

Annecy, 26-29 September 2022

M.Sc. Sara Pasini
Dr. Nico Dalla Libera

Eastern Alps River Basin District Authority (Italy)

The Eastern Alps River Basin District (ITA), Italy

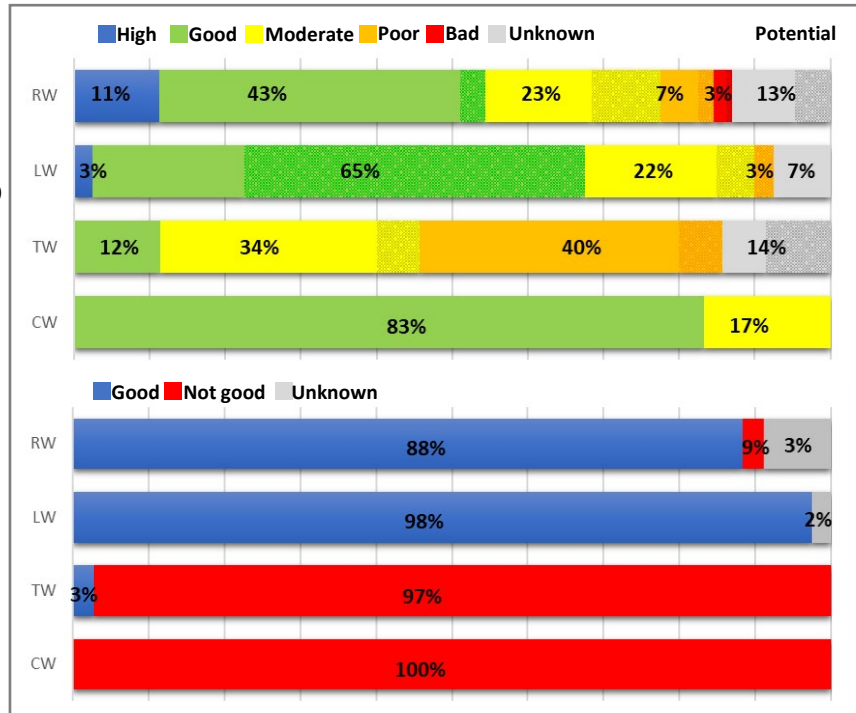


- 34.000 sqkm
- 7.000.000 inhabitants
- 5 Administrative bodies
 - Regione del Veneto
 - Regione Friuli Venezia Giulia
 - Province Autonome di Trento e Bolzano
 - Provveditorato alle Opere Pubbliche
- 14 RBs, including 4 transboundary RBs
 - CH (Drava Italiana)
 - AT (Slizza)
 - SI (Isonzo, Levante)
- Inland surface water, groundwater, transitional and coastal waters

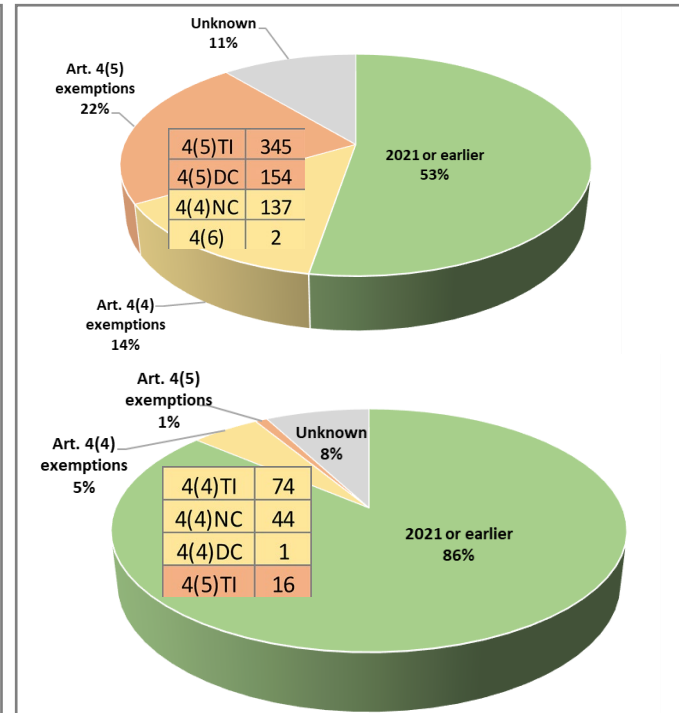
Category	Nr.
RW	1689
LW	40
TW	35
CW	12
Total SWB	1776
Total GWB	125

Conditions of ITA District surface waters (3rd RBMP)

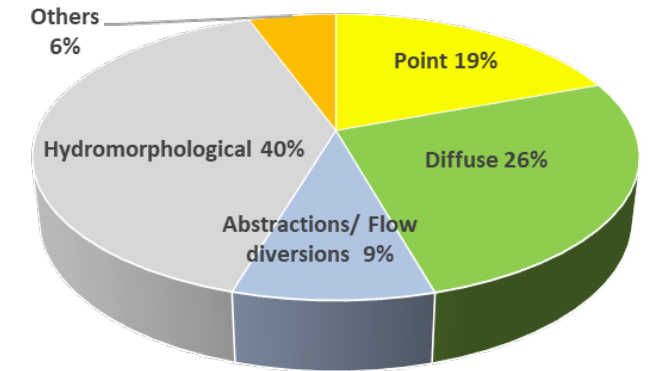
Status/potential



Objectives and exemptions



Significant pressures

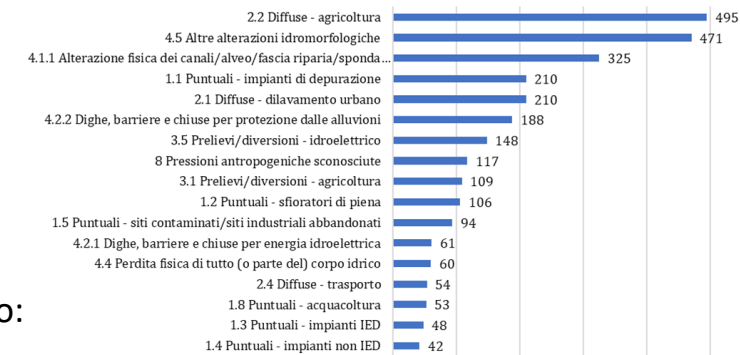


3061 significant pressures (55% of SWB)

- 40% hydromorphological alterations
- 26% diffuse sources (mainly agriculture and urban runoff)

- 87% ecological and 91% chemical quality classified
- Eco: high/good for 62% classified SWB
- Chem: good for 94% classified SWB
- Nearly all TW-CW (46 out of 47) are failing good chem status (biota)


- 53% SWB achieved eco objectives
- 86% SWB achieved chem objectives
- Exemptions mainly set for eco objectives (art.4(5) due to tech. infeasibility and disproportionate costs)
- Chem exemptions mostly art.4(4) beyond 2027 due to:
 - Natural conditions
 - Broader time extensions allowed for 2013/39 substances



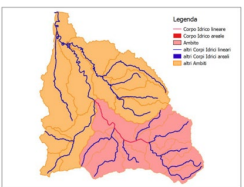
Progress and challenges in the 2nd cycle




2013/39 Directive
application: new substances, **partial*** biota monitoring (2016→)



EC Decision 2018/229
application: new BQEs/boundaries, NISECI **test*** application (2016→)



Pressures-impacts analysis:
application of 2018 national guidance (2019→)



POTENZIALE ECOLOGICO	Colore convenzionale
Buono e oltre	Verde
Sufficiente	Giallo
Scarso	Arancione
Cattivo	Rosso

HMWB, AWB full identification (2020 district methodology) + **GEP (RW, LW):** application of 2016 national methodology



PIANO DI GESTIONE DELLE ACQUE
River Basin Management Plan
Aggiornamento 2022-2027
Descrizione generale delle caratteristiche del distretto e individuazione dei corpi idrici
Volume 1
Dicembre 2021

3rd River Basin Management Plan
December 2022

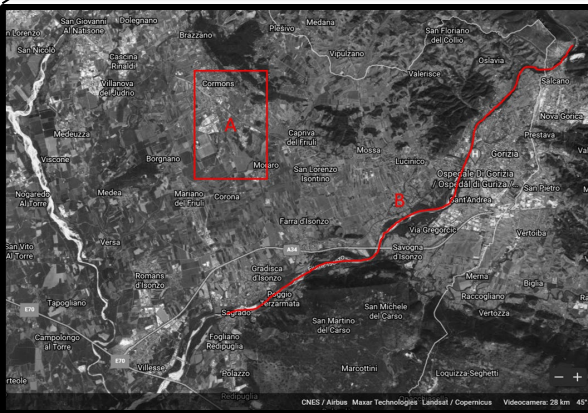
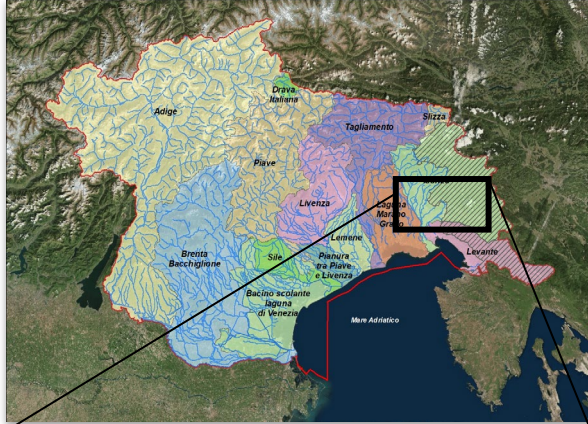
2nd River Basin Management Plan
December 2015



- Further improvement of chemical/ecological monitoring* (technical and economic limits!)
- Achieve full classification of WB status/potential
- Definition of substance-specific measures (es. PBTs)
- Improvement of Inventory of emissions, discharges and losses of priority substances and pollutants (art.5 Dir.2008/105/EC)
- Incorporating climate change is not easy (lack of feasible tools)

EU Pilot 7304/15/ENVI
EU Pilot 9722/20/ENVI

Modeling agricultural pollution: pilot-scale experiences in the ITA District



Green Vipava/Vipacco, Isonzo/SOca and Livenza INfrastructure

Green infrastructures for the conservation and improvement of the state of protected habitat and species along the rivers

WP3. Development of modeling tools to assess the impacts of agriculture on surface waters: modeling of transport and fate of the most relevant **contaminants (pesticides, nitrogen)** in the study area

Context:

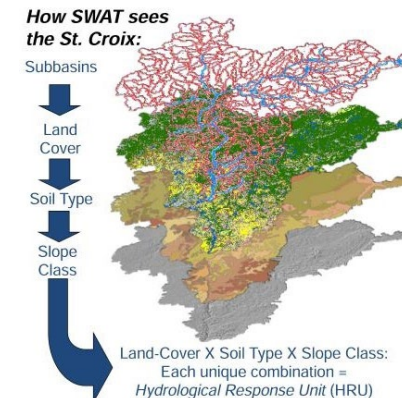
Agricultural land use (extensive vineyard) in a transboundary RB (Isonzo/Soča)

Objectives:

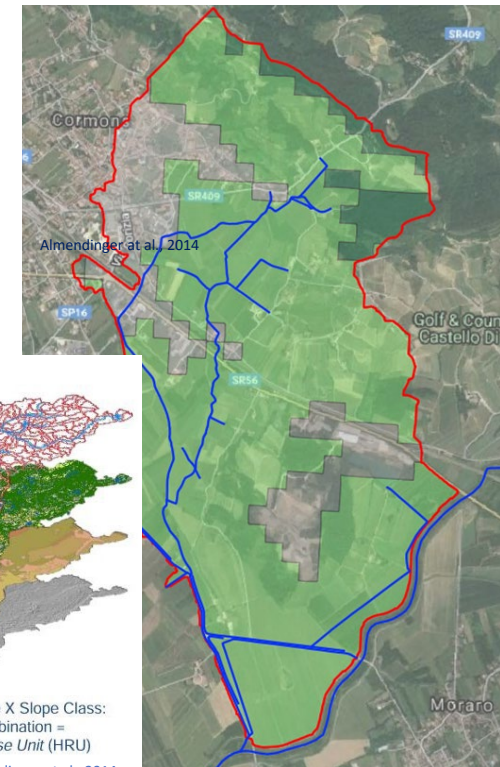
- Enhance knowledge on diffuse agricultural pressures (crop management, pesticides and fertilizers application)
- Provide tools to estimate contaminant reductions in water in response to simulated management practices

Two pilot projects:

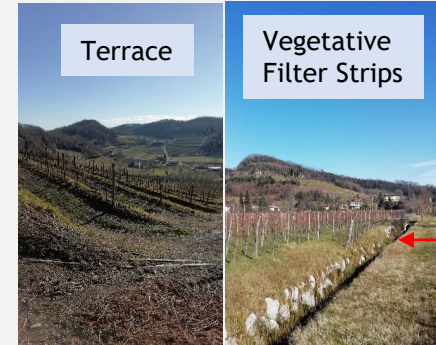
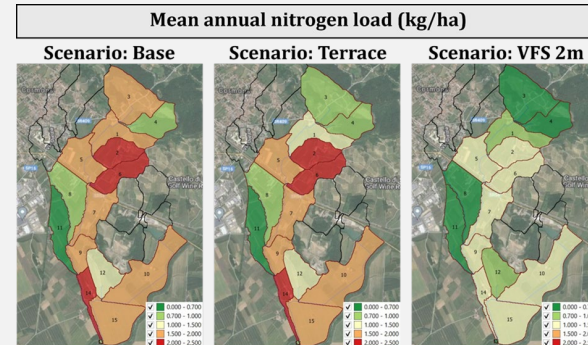
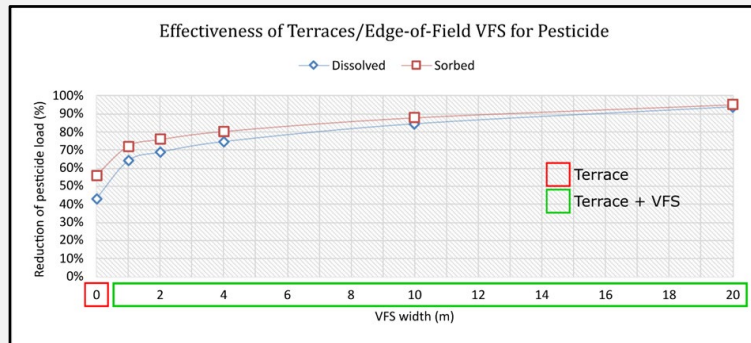
- Assessment of impacts from agriculture on water quality through **SWAT model** application (Bisinta sub-basin pilot application)
- Assessment of Isonzo/Soča self-remediation as a function of its water regime by means of our **ORGANICS** tool (available as free plugin for QGIS)



Almendinger et al., 2014.



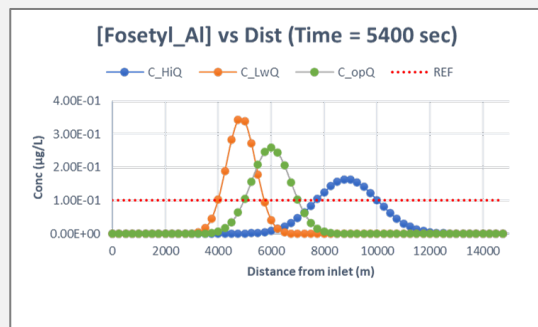
GREVISLIN: main results



Pilot project A:
Significant reduction of average annual contaminant loads through management (Terrace/VFS):

- 40-90% respect to «base» scenario
- 60-70% with 2m VFS + Terraces

Significant sediment, N and P reduction



Pilot project B:

- Self-remediation processes in the Isonzo river are based on advection-dispersion mechanism. Small contribute from reaction (long pesticides half life vs. short in-stream residence time)
- Lower river discharge causes higher contaminant concentrations, while higher river discharge allows self-purification and supports the improvement of water quality
- Estimated «optimum» river discharge for continuity restoration ensures both self-remediation processes and the good functioning of the river ecosystems

- ✓ Improved knowledge about agricultural pressures and their mitigation
 - ✓ VFS are feasible and effective mitigation measures
 - ✓ Pesticide modeling provide knowledge to improve chemical monitoring programmes
- ✓ Provided basic modeling tools and skills at WFD's service to be further developed
- ✓ Reinforced IT-SI cross-border cooperation

Capitalizing at basin scale: SIMBA model

Autorità di bacino distrettuale delle Alpi Orientali

FSC Fondo per lo Sviluppo e la Coesione

PIANO OPERATIVO AMBIENTE

MINISTERO DELLA TRANSIZIONE ECOLOGICA

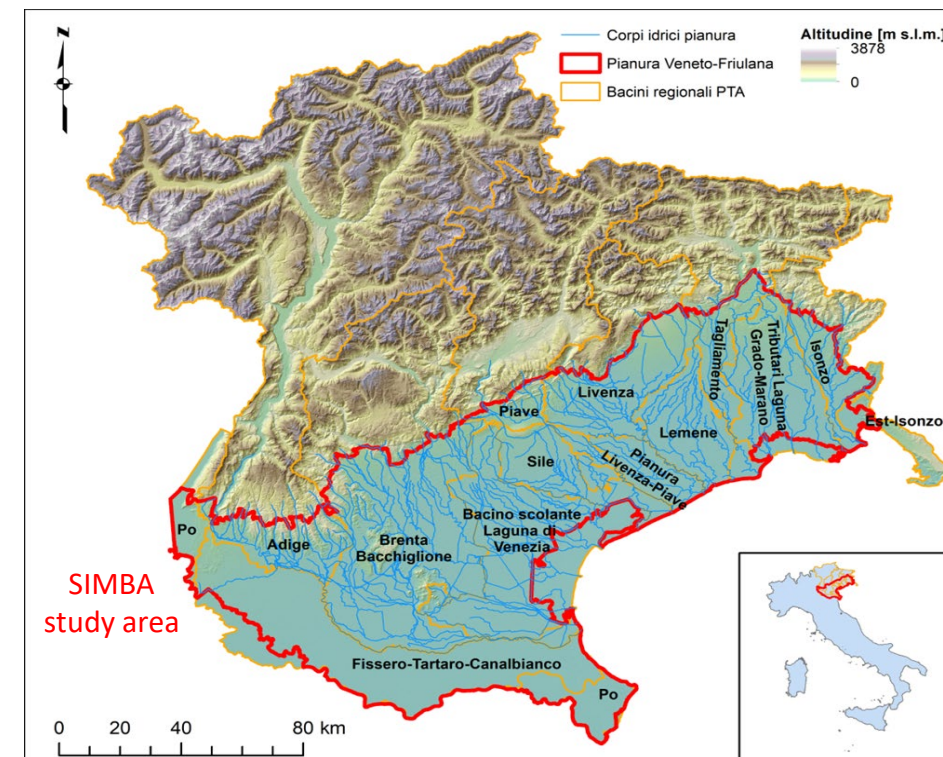
UNIVERSITÀ DEGLI STUDI DI MILANO

Development of a Mass Balance Model for nutrients and pesticides pollution in the ITA District (**SIMBA project**)

Duration: 24 months (Oct 2021 – Sep 2023), collaborating with Università degli Studi di Milano
Funded by Italian Ministry of Environment

Objectives:

- Provide a modeling tool to assess nutrients and pesticides fate and transport in the District (point and diffuse source pollution from agriculture and urban development)
- Support pressures-impact analysis and prioritization of mitigation measures
- Support the improvement of Dir. 2008/105/EC inventories
- Simulate future scenarios (including different land/water uses and climate change)



Wider study area
(District plain)

World, european, local data
Hydrology Geomorphology Soil type
Climate Land use

Point source pollution
(WWT plants)

Urban/industrial
discharge
monitoring data

Full list of WFD
monitored
pollutants

WISE
WATER INFORMATION
SYSTEM FOR EUROPE

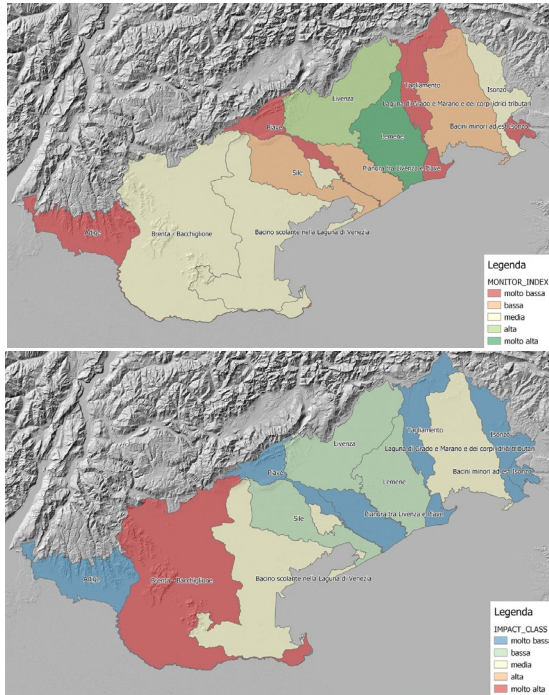
Additional
mitigation
measures

SIMBA
model

Phase	Duration (months)	Target/Output
0	2	Preliminar study
1	4	DB geo-database implementation
2	6	Pollutant clustering Model setting Preliminary simulations
3	6	Model implementation and calibration
4	5	CC scenario implementation Training & Dissemination

SIMBA: preliminary results and skills at WFD's service

Preliminary results from phases 0-1-2

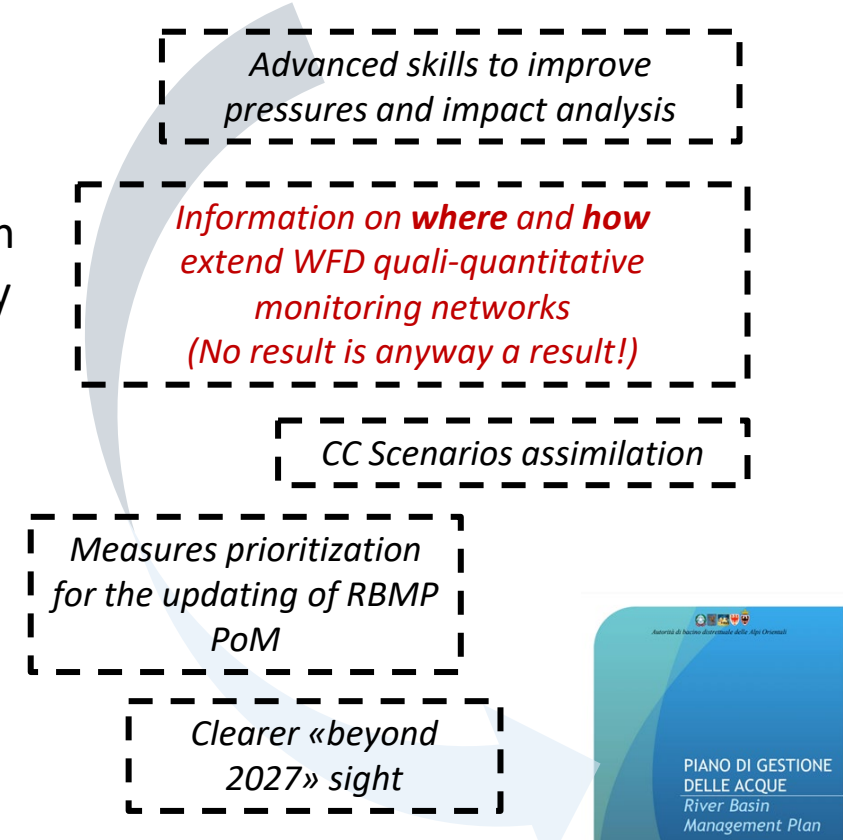


- SWAT model is suitable to be implemented in the whole ITA plain area
- Single basin modeling is an appropriate approach to fit at best local conditions and data availability
- Lack of quali/quantitative monitoring data for calibration in highly-impacted basins
- Clustering of substances need to be basin-specific in order to be fit for local monitoring information

Next steps (Phases 3-4) and expected outcomes

- Full model implementation and calibration
- Land use, water use, climate change scenarios simulations

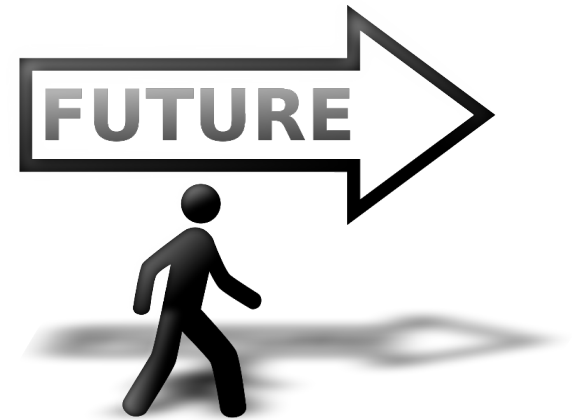
...and lessons learned:



4th River Basin Management Plan

Conclusions

- Improving DPSIR framework is a fundamental way to improve WFD implementation
- Useful tools can be developed through the capitalization of results from pilot-scale experiences (role of European and national projects)
- Understanding primary shortcomings allows to prioritize improvement actions
- **“What to do beyond 2027?”** Key-elements to work on in the 3rd cycle:
 - ✓ Strengthen pressures analysis for heavily impacting pressures (e.g. agriculture)
 - ✓ Simulate water and land use scenarios and the effect of specific mitigation measures
 - ✓ Assimilate climate change scenarios



MAIN REFERENCES

Almendinger J.E., Deb D., Ahmadi M., Zhang X., Srinivasan R., (2014). Constructing a SWAT model of the St. Croix River basin, eastern Minnesota and western Wisconsin

Interreg GREVISLIN Project – WP 3.3.3, D.1 (2022). Uno strumento per la gestione agrotecnica indirizzata all’agricoltura sostenibile. Available at: <https://www.ita-slo.eu/it/grevislin>

Interreg GREVISLIN Project – WP 3.3.3, D.2 (2022). Un Sistema di analisi degli impatti dell’agricoltura. Available at: <https://www.ita-slo.eu/it/grevislin>

Interreg GREVISLIN Project – WP 3.3.3, D.3 (2022). Valutazione del potenziale effetto delle pratiche agricole su ambiente e aree protette. Available at: <https://www.ita-slo.eu/it/grevislin>

Rossetto R., Cisotto A., Dalla Libera N., Braidot A., Sebastiani L., Ercoli L., Borsi J. (in press). ORGANICS: a QGIS plugin for simulating one-dimensional 2 transport of dissolved substances in surface water

Autorità di bacino Distrettuale delle Alpi Orientali. Piano di gestione delle acque – River Basin Management Plan. Aggiornamento 2022-2027. Available at: <http://www.alpiorientali.it/direttiva-2000-60/piano-di-gestione-acque-2021-2027/documentazione-e-cartografia.html>



Autorità di bacino distrettuale delle Alpi Orientali

Thank you for your attention!

Sara Pasini sara.pasini@distrettoalpiorientali.it

Nico Dalla Libera nico.dallalibera@distrettoalpiorientali.it

Eastern Alps River Basin District Authority (Italy) www.alpiorientali.it