

An architectural rendering of a modern, multi-story building with a curved facade, featuring large windows and balconies. The building is set on a green lawn with palm trees and other landscaping. The sky is light blue with a flock of birds flying in the distance.

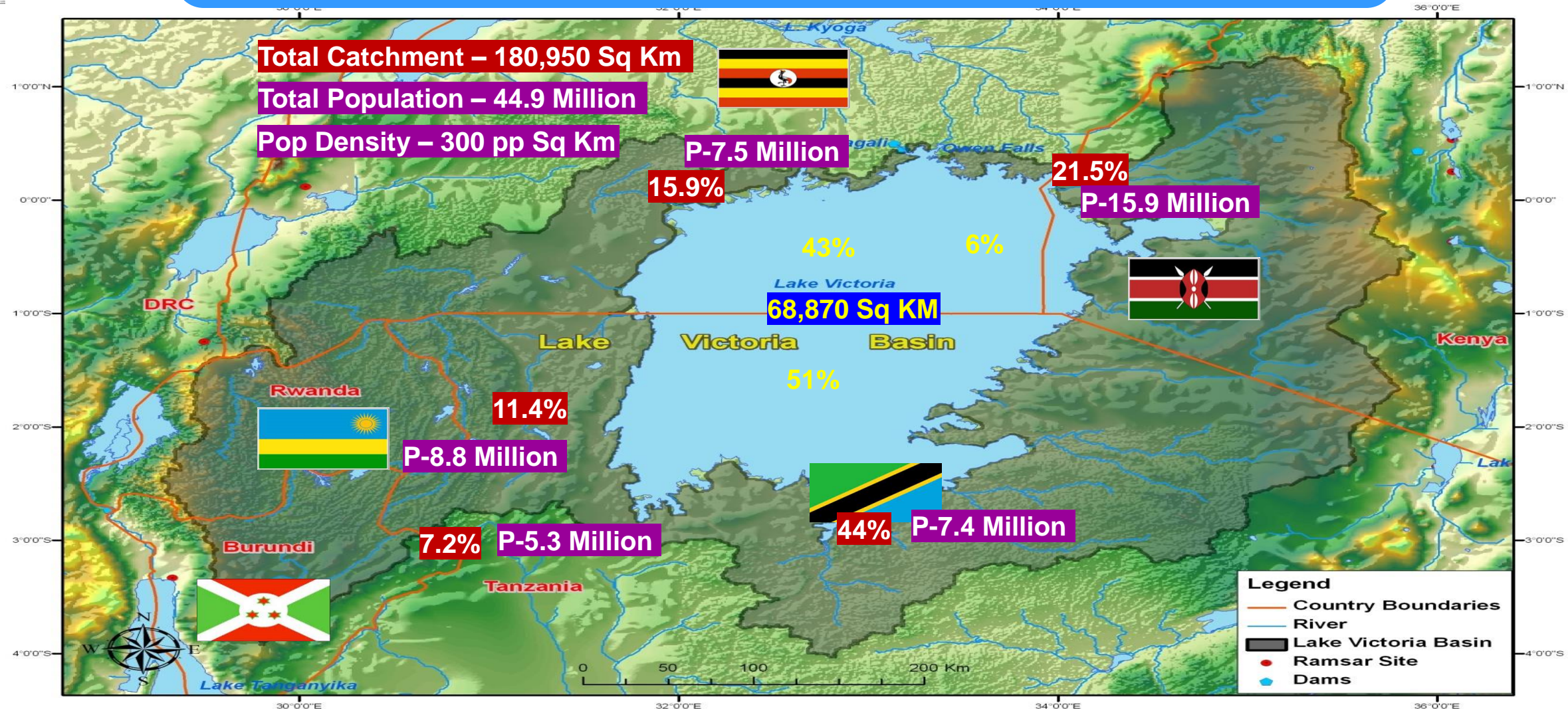
EAST AFRICA COMMUNITY LAKE VICTORIA BASIN COMMISSION

David S. Mlote
Legal Officer
Lake Victoria Basin Commission



LVBC

Lake Victoria Basin





LAKE VICTORIA BASIN COMMISSION



- LVBC is a specialized institution of the EAC
- Establishment provided for under Article 114 of EAC Treaty (1999).
- Operationalized by the Protocol for Sust. Dev. of LVB (2003) & (LVBC Act 2022 Gazetted)

Vision

"A prosperous population living in a healthy and sustainably managed environment providing equitable opportunities & benefits"



Mission

to promote, facilitate and coordinate activities of different actors in the LVB



Objective

To promote equitable economic growth, poverty eradication, sust. use & mgt. of NR, Env. Protection and Safety of Nav



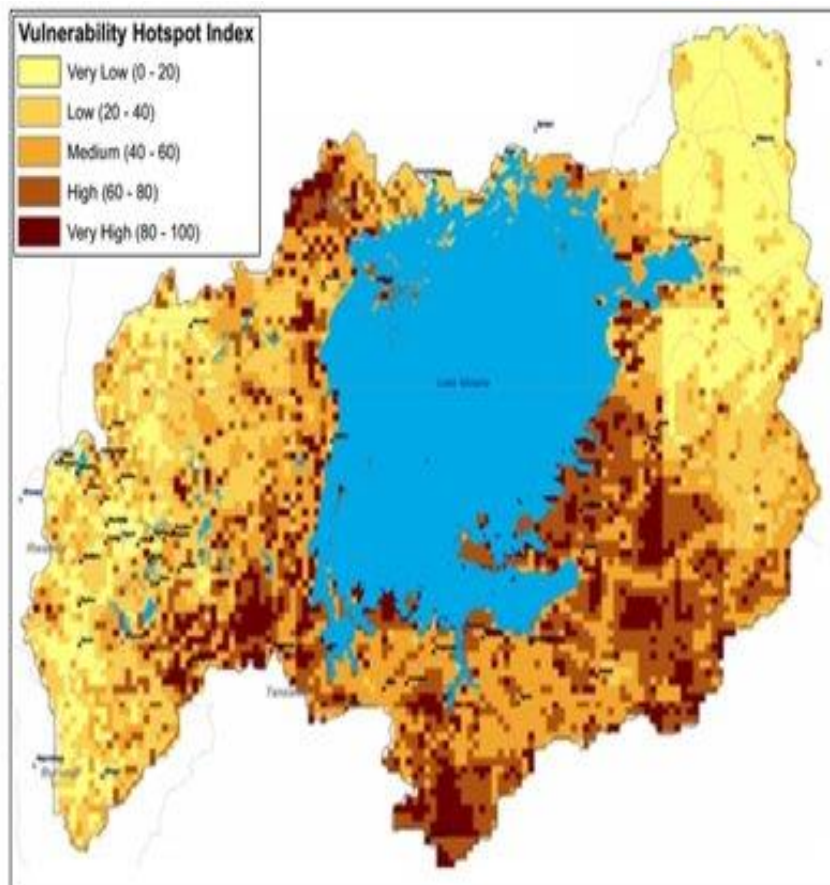
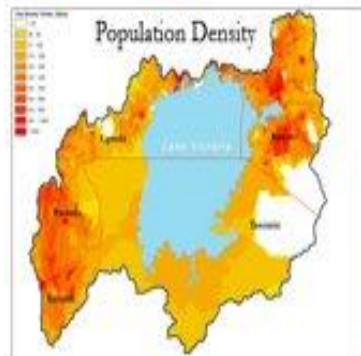
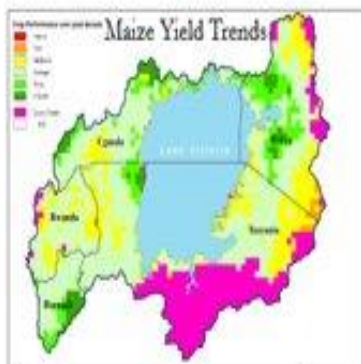
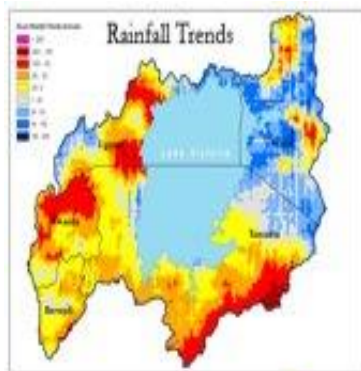


Climate change in lake Victoria basin



Vulnerability to Climate Change

- **Climate Change impacts:** manifested in pro-longed droughts, flooding and changes in season.
- Climate Change impacts on all sectors in LVB including:
 - Water Resources with observed changes in hydrologic cycles
 - Terrestrial ecosystems that are key to food production
 - Agricultural productivity
 - Health (biology & ecology of disease vectors
 - Energy, Transport, and Related Infrastructure



The LVB vulnerability index, was generated based on climatic and socio-economic layers. The map is expected to be dynamic and evolve with changing situation in the region.



Impacts of Climate Change on water resources

- Climate change related precipitation induced lake level fluctuations.
- Increased river and lake water temperature rise altering aquatic habitat and biodiversity .
- Changes in hydrological cycle as well as the quality of water resources and water availability coupled with rising demand for water in the entire LVB;
- Climate induced responsive agric. intensification

Total numbers (and percentage of all species assessed) of freshwater fishes considered highly exposed to climate change under both timeframes and Representative Concentration Pathways (RCPs) considered





LVBC's Previous and current activities related to CC

❖ CC related Projects and Programs

- Lake Victoria Environmental Management Programme I & II (2009-18 WB, SIDA, GEF)
- Adapting to climate change on LVB (USD 5 Mil. Funded by AF through UNEP)
 - Development of the LVB climate change vulnerability assessment
 - LVB CC adaptation strategy and Action Plan
- Nile cooperation for Climate Resilience Project (3-year project USD 0.75 mil funded by WB)
 - Draft regional Water quality Management Policy, strategy and Action Plan (waiting adoption)



LVBC CC activities Continued...



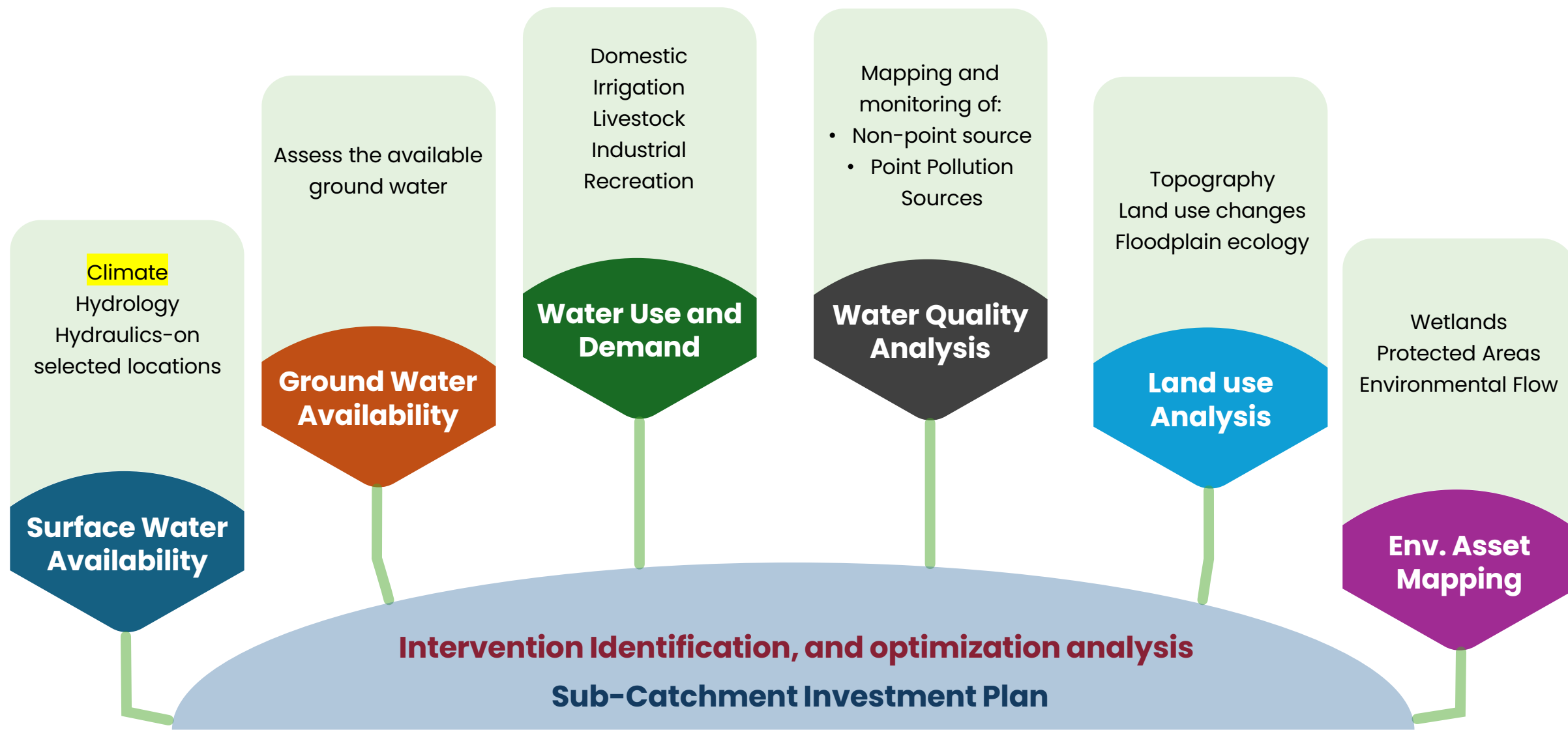
- Climate Resilience for Sustainable Transport Infrastructure in Lake Victoria Basin (*expected to be funded by the AfDB Climate Action window*)
- ❖ State of the Basin Report
- ❖ Water information system (under IWRM project)
 - possible project to enhance decision pathways through data and info management in LVB?
- ❖ Assent of the Lake Victoria Basin Commission Act 2022
- ❖ Accreditation of LVBC with funding agencies like GCF & AF



Development of the LVB Investment Plan

Key Building Blocks

Known in time and space





Lessons learnt

- Options for funding are limited when compared with sovereign states, with climate funds such as the Green Climate Fund (GCF) only available to those projects agreed to by National Designated Authorities (NDAs);
- continued partnership with CC experienced international org. like WB, UNEP, UNDP, CI, INBO in developing bankable CC projects



Thank you