

# Restoring free-flowing rivers – A transboundary perspective from the river Rhine basin

22nd International Conference of EURO-INBO

May 19th - 23rd 2025

Laura Poincot (ICPR secretariat)



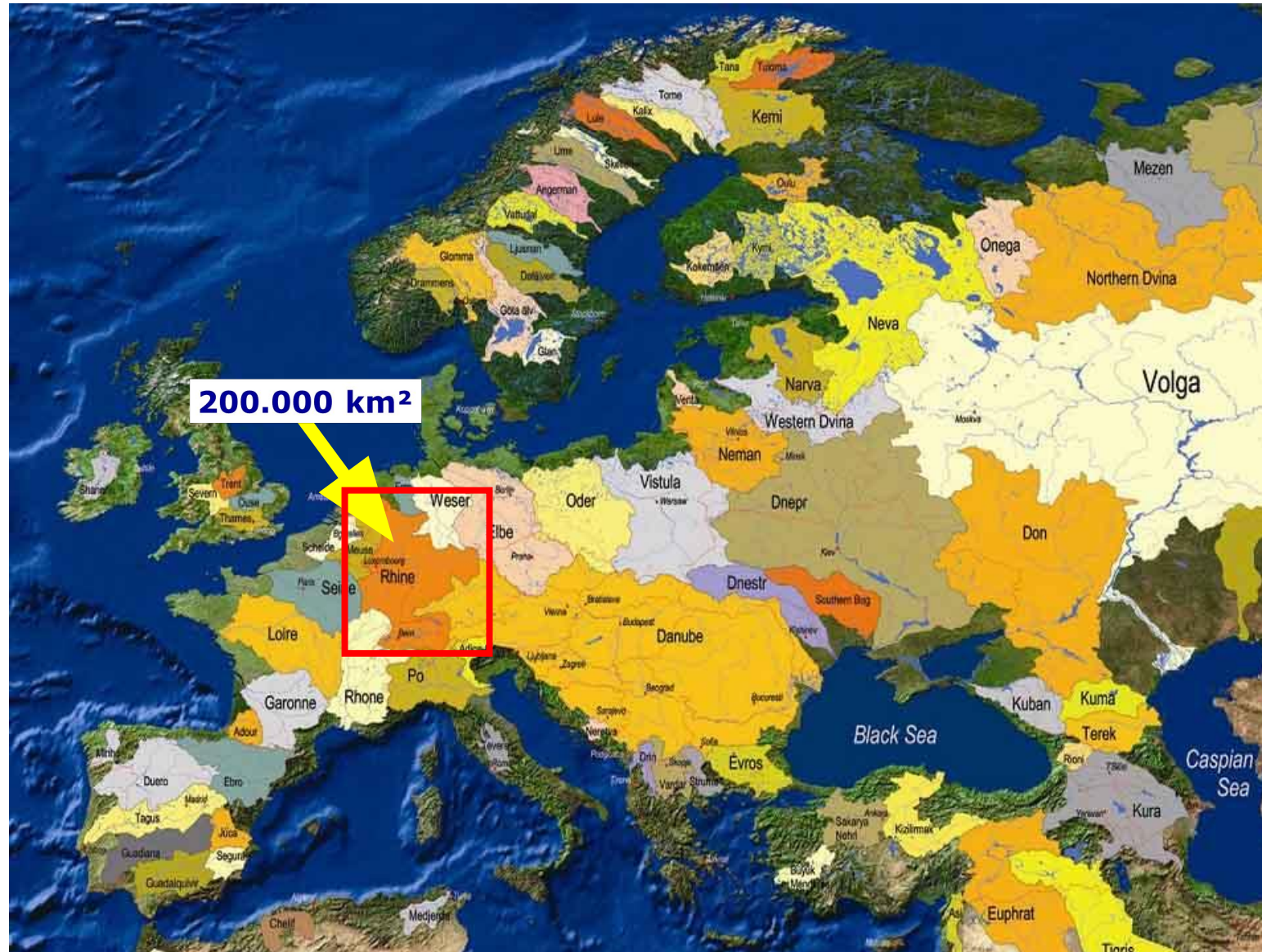
Internationale  
Kommission  
zum Schutz  
des Rheins

Commission  
Internationale  
pour la  
Protection du  
Rhin

Internationale  
Commissie ter  
Bescherming  
van de Rijn

International  
Commission  
for the  
Protection of  
the Rhine

# The Rhine – a European river





# One river basin – Nine countries



The Netherlands  
Luxembourg  
Belgium/Wallonia  
France  
Germany  
Austria  
Liechtenstein  
Switzerland  
Italy

# The Rhine serves many functions



Ecology



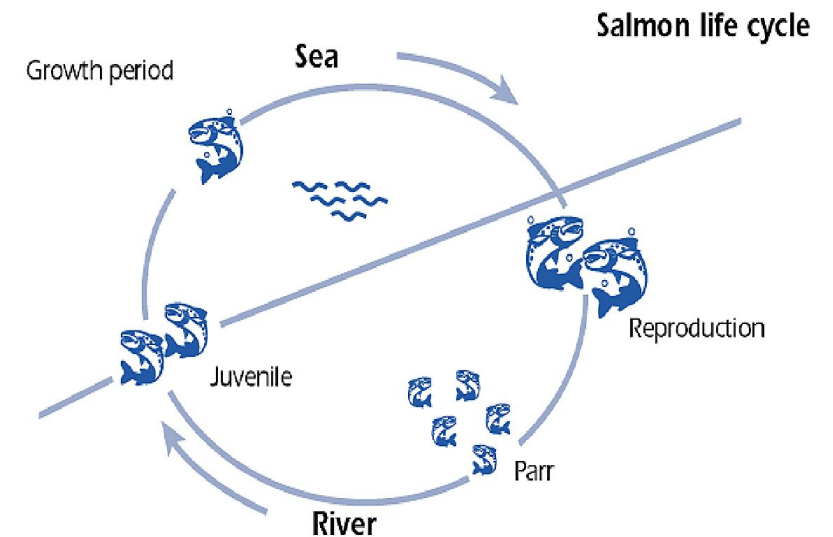
# Restoration of river continuity in the Rhine: How it all began...



1986  
Sandoz  
accident



□ First Rhine Action Programme in 1987 incl. Salmon 2000 (since 2018 Masterplan Migratory Fish)



# Programme “Rhine 2040”



- Adopted at the 16<sup>th</sup> Conference of Rhine Ministers in Amsterdam on 13 February 2020
- <https://www.iksr.org/en/icpr/rhine-2040>
- Objectives for:
  - Climate change adaptation
  - **Biodiversity**
  - Water quality
  - Flood risk management
- Translated into “Working plan 2022-2027”





# Achievements (2000-2020) and Goals 2040



+ 200 km<sup>2</sup>  
by 2040

140 km<sup>2</sup>  
of floodplains have  
been reactivated

Structural  
diversity along  
166 km  
of riverbanks has  
been increased

+ 400 km  
by 2040

124  
lateral water  
bodies  
reconnected  
to the river  
Rhine

+ 100  
by 2040

592  
obstacles  
to  
migration  
have been  
made  
passable

+ 300  
by 2030

- Dismantling of weirs in tributaries and secondary waters - wherever the effects and uses make it possible
- preserve freely flowing migration routes



Angelika Halbig, BCE

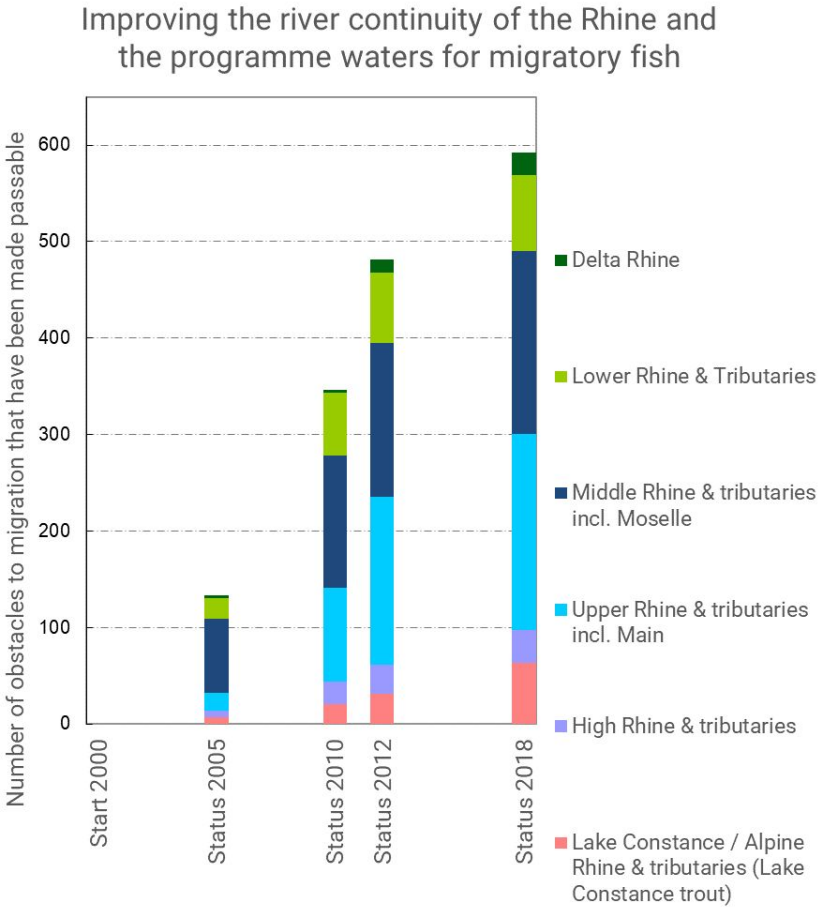


Martin Hoffmann

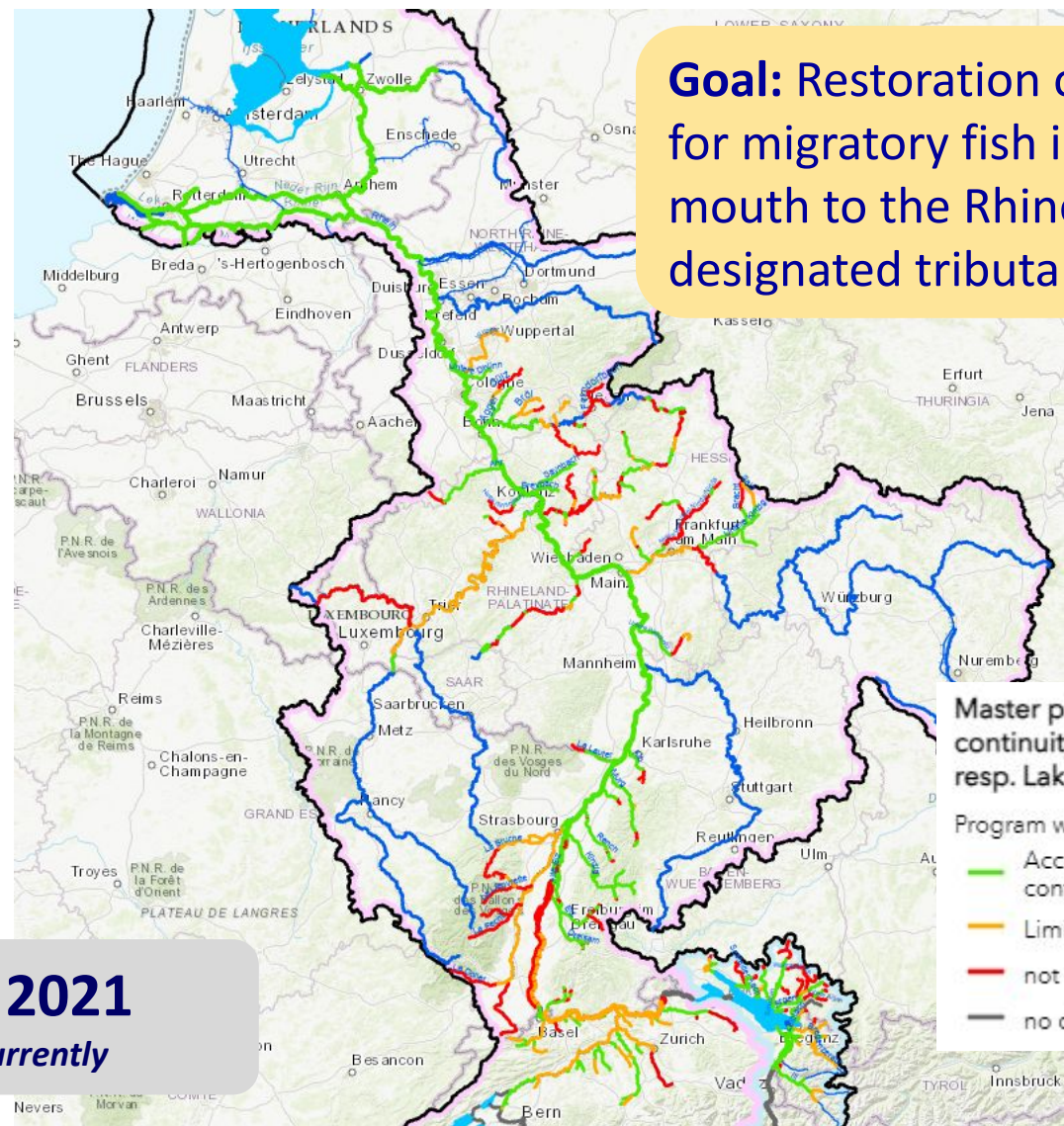
*see Balance Rhine 2020 and  
River basin management plan Rhine  
2022-2027*



# Restoration of longitudinal connectivity



**Goal:** Restoration of ecological continuity for migratory fish in the Rhine from the mouth to the Rhine Falls (CH) + in designated tributaries



**Master plan Migratory Fish Rhine: Upstream continuity**  
Example of the salmon and sea trout resp. Lake Constance lake trout

**Program waters for migratory fish**

- Accessible upstream or not accessible but local continuity
- Limited upstream accessibility
- not accessible upstream
- no data

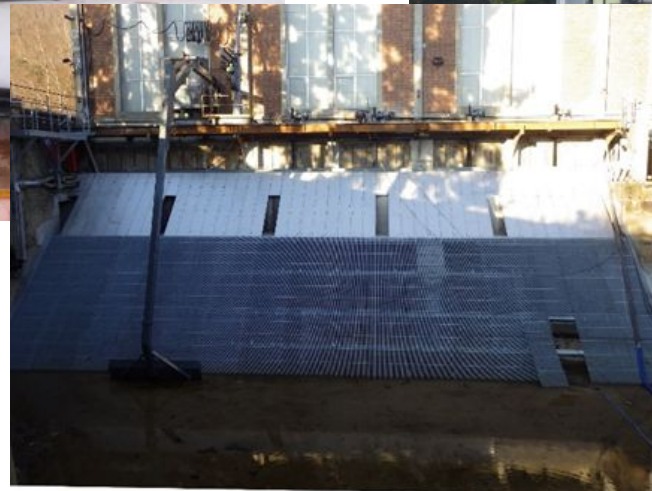
**State 2021**  
*Data is currently updated*



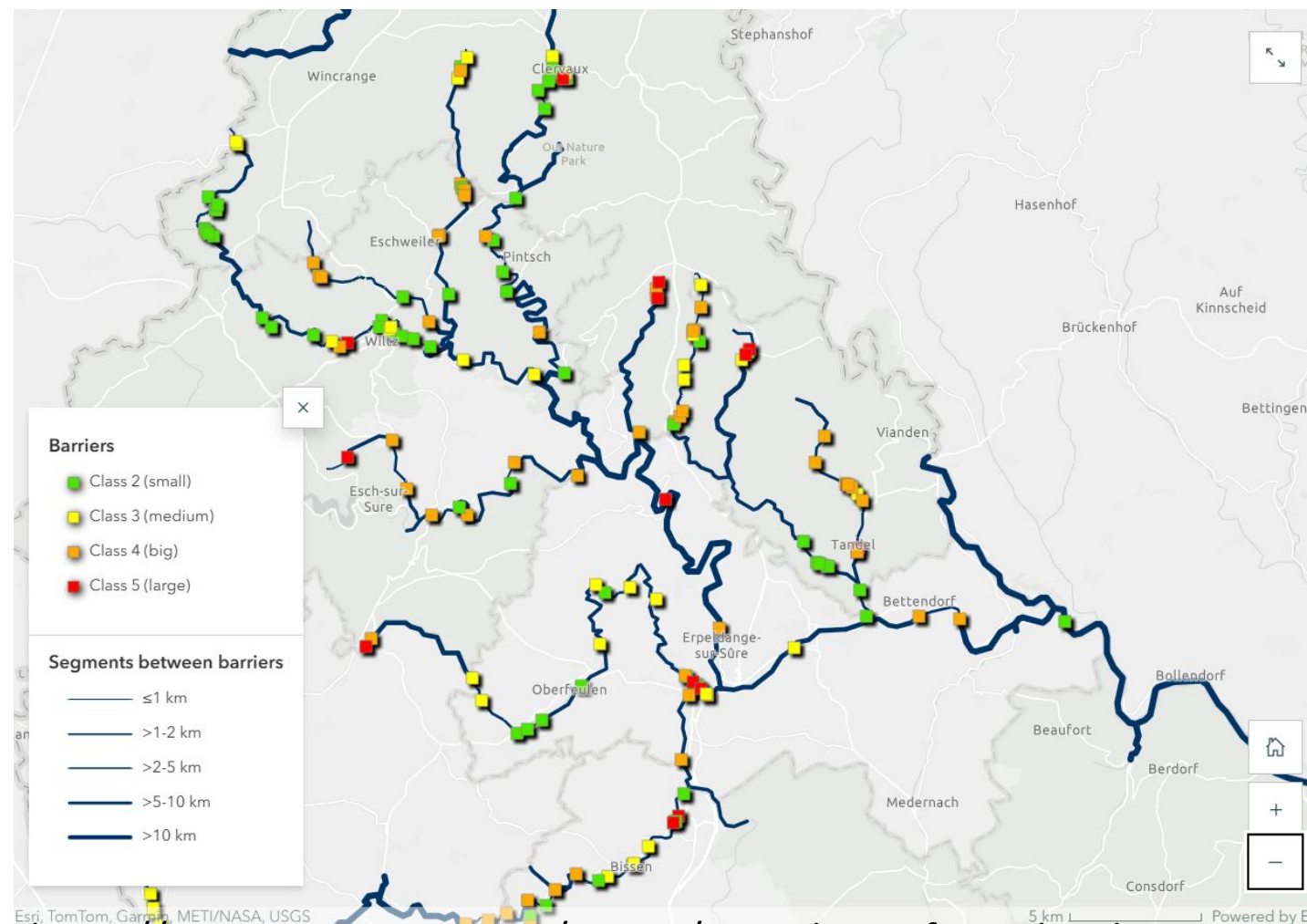
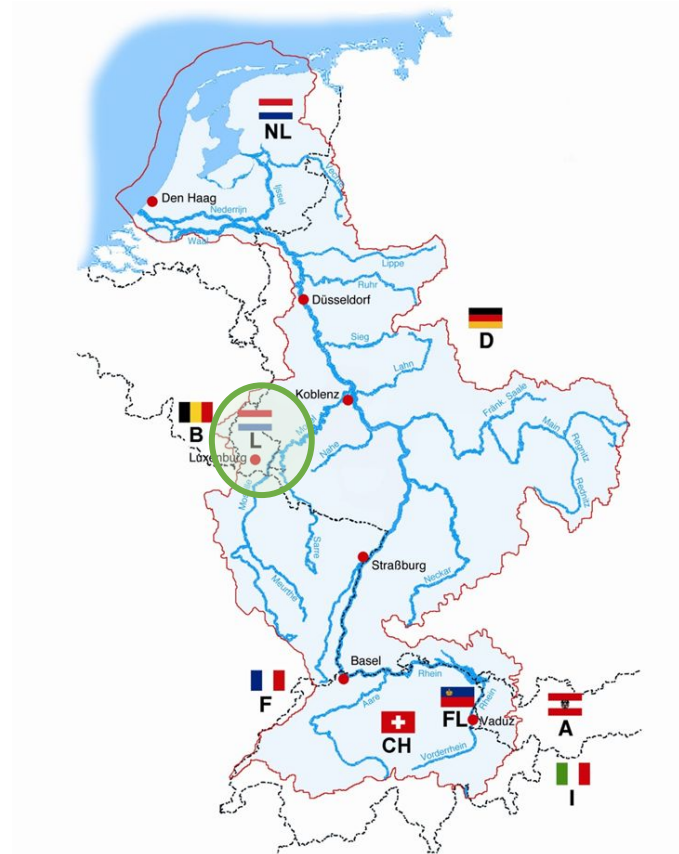
# Longitudinal connectivity goes both ways



- ICPR recommendations on the protection of downstream migrating fish (see ICPR technical report no. 303)

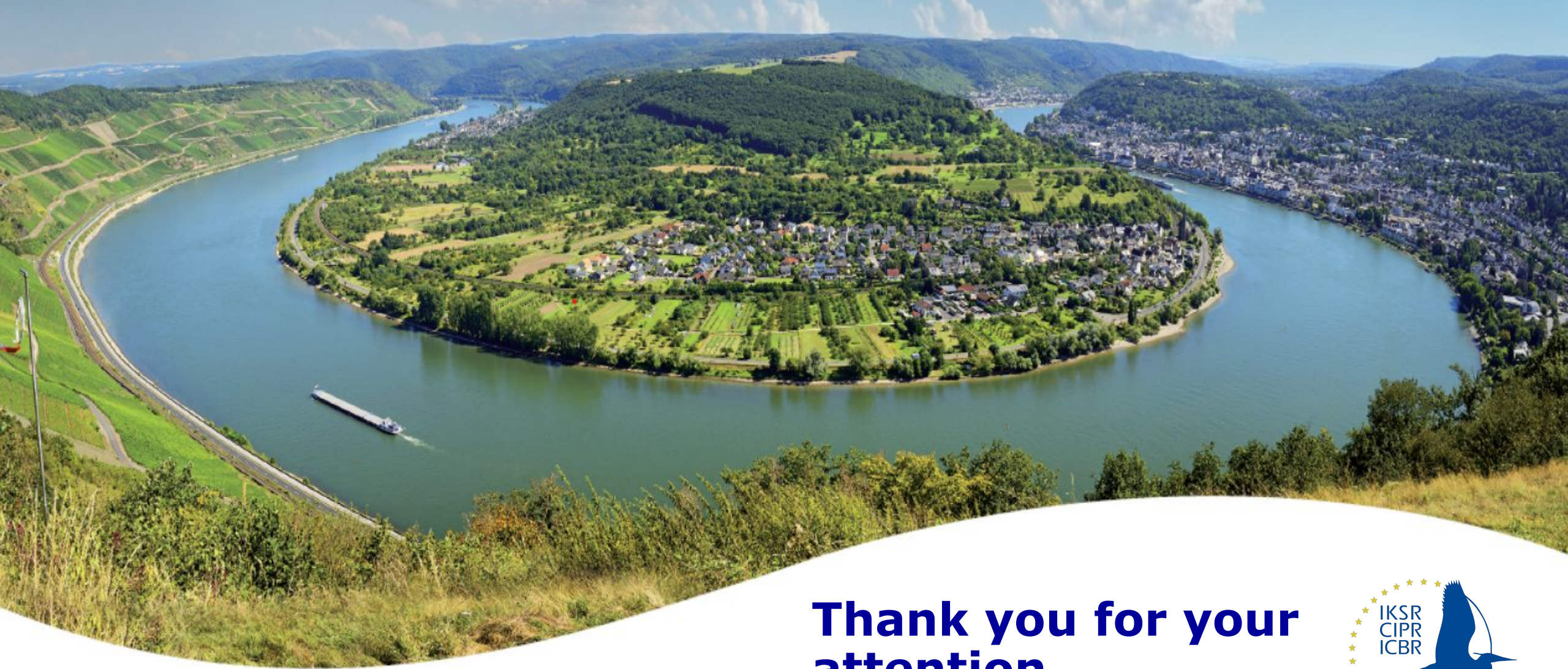


# Free Flow Strategy of Luxembourg



<https://storymaps.arcgis.com/stories/8696ab8188fe452da39b1bb23f5b9bf5>





**Thank you for your  
attention**



International Commission for the Protection of the Rhine  
**[www.iksr.org/en](http://www.iksr.org/en)**