

ADVANCING WATER SECURITY, CLIMATE RESILIENCE AND BIODIVERSITY CONSERVATION

through Nature-based Solutions in the State of Rio de Janeiro

inea instituto estadual do ambiente

Secretaria do Ambiente e Sustentabilidade



GOVERNO DO ESTADO
RIO DE JANEIRO





CHALLENGES IN THE STATE OF RIO DE JANEIRO



Serra dos Órgãos , 2014



Petrópolis, 2022



Lagoa do Campelo, 2015



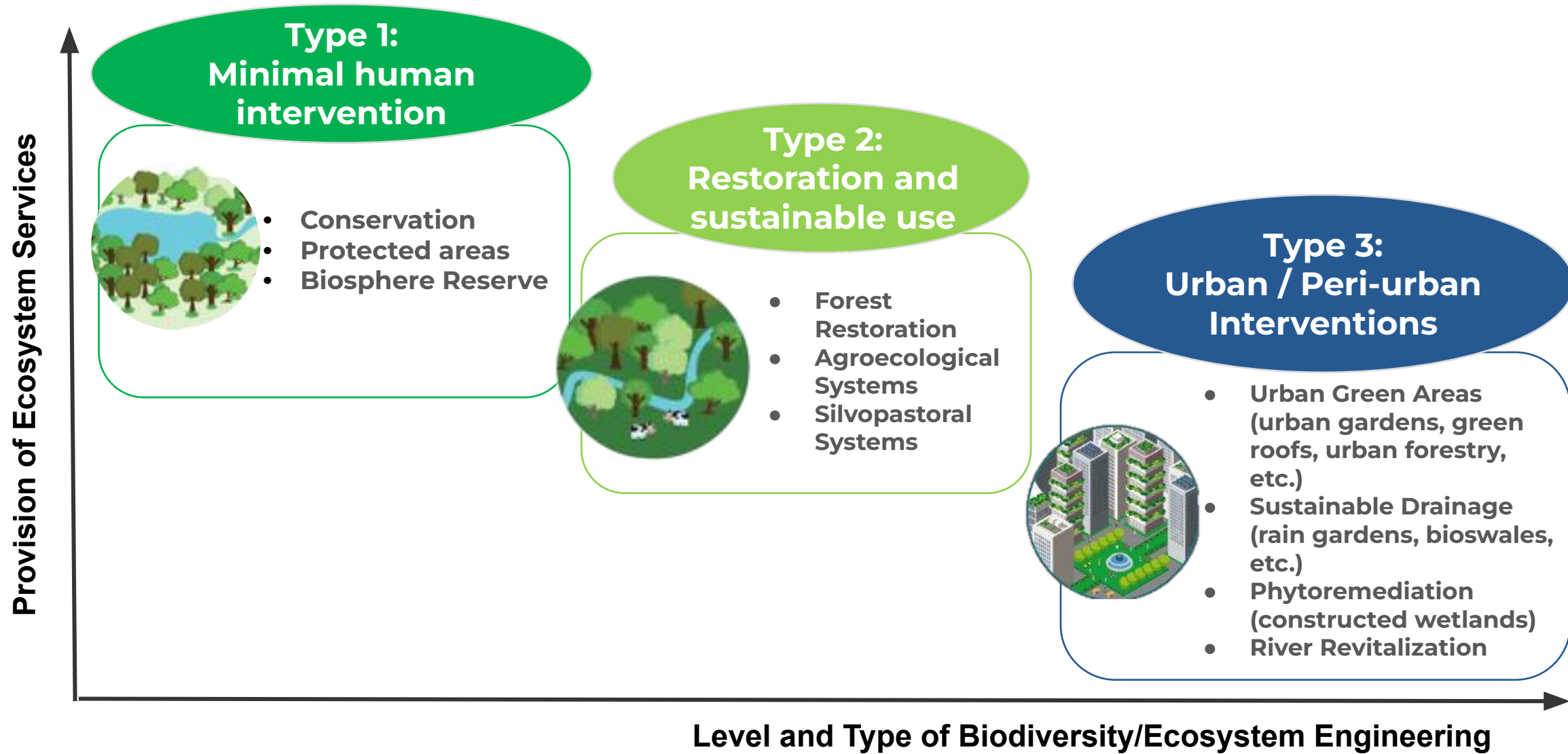
Ondas de calor, 2022-2023



Baixada fluminense, 2024



NATURE BASED SOLUTIONS: WATER SECURITY, CLIMATE AND BIODIVERSITY INTEGRATION



PROTECTED AREAS AND WATER SECURITY



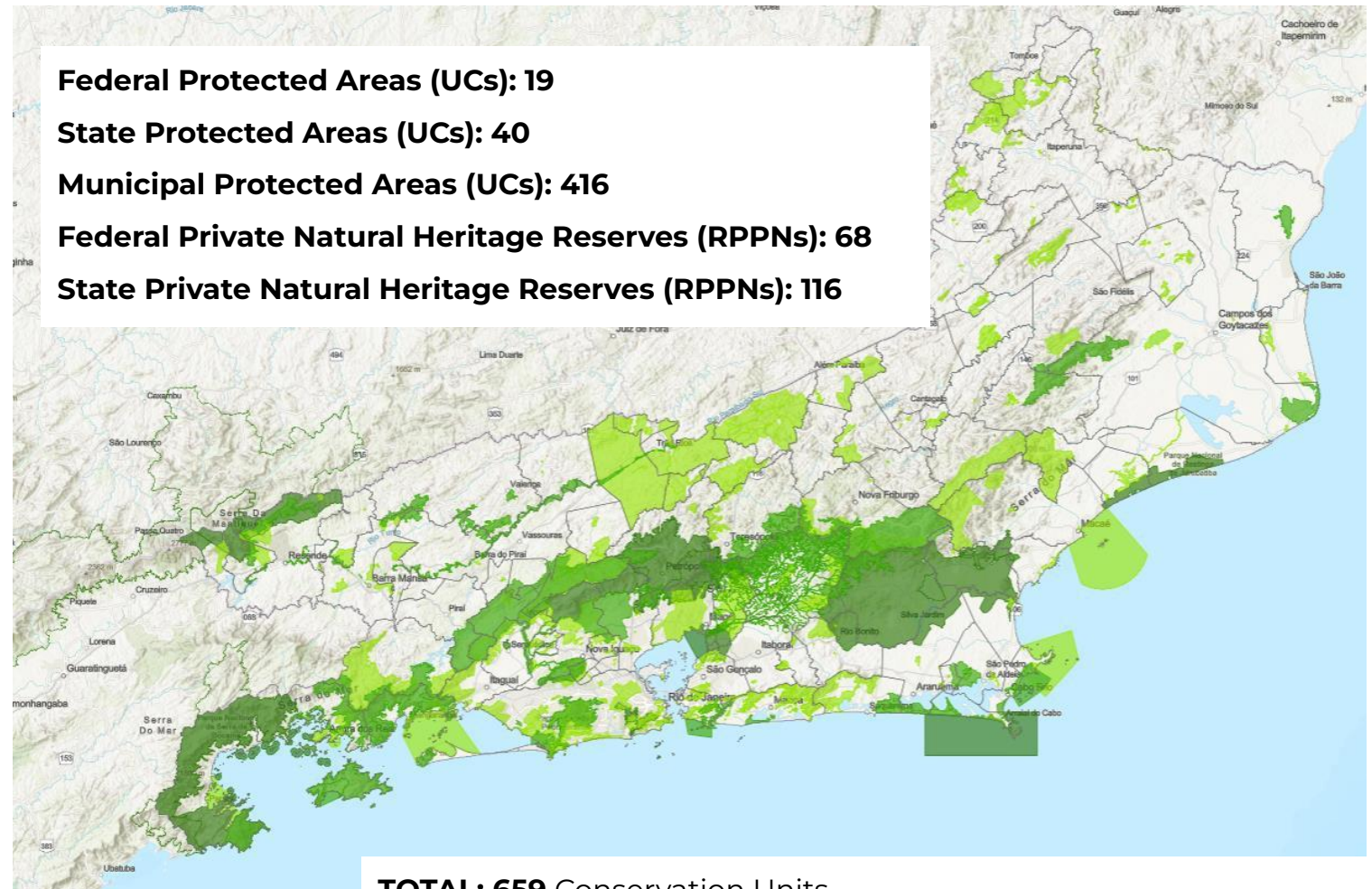
30% of the state's territory protected by Conservation Units



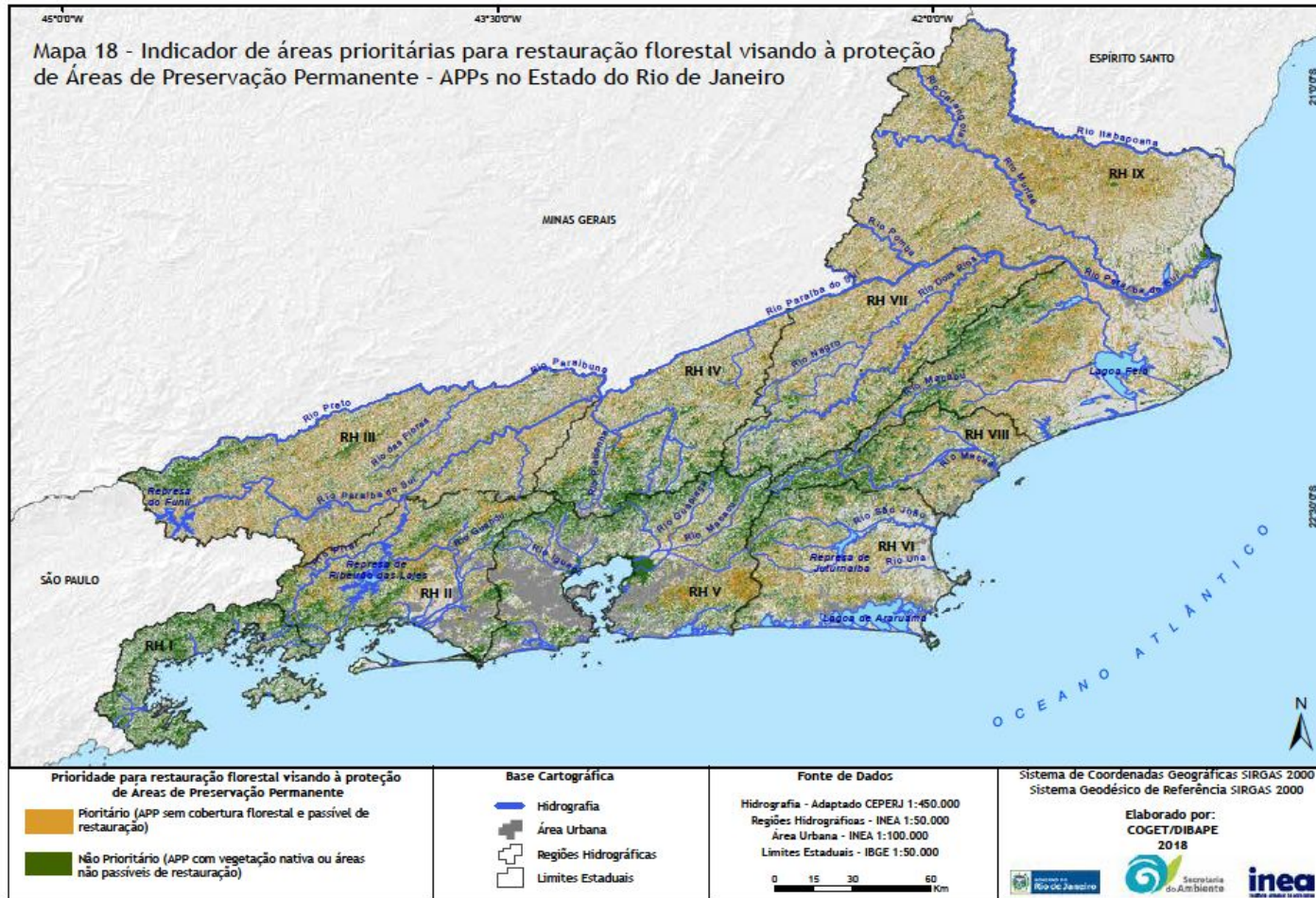
45% of water intakes located within Conservation Units



70% of watershed areas protected by Conservation Units



PRIORITY AREAS FOR RESTORATION IN RURAL PROPERTIES



550 thousand hectares of priority areas for forest restoration in Permanent Preservation Areas



The government must provide technical assistance for vegetation restoration in small rural properties

STATE RESTORATION PROGRAM



Goal: Restore 440,000 hectares (achieving 30–40% forest cover) by 2050



USD 100 million from the Atlantic Forest Fund – restoration portfolio



815 hectares currently under restoration



Partnerships and resource mobilization



USD 22 million in matchfunding from the Floresta Viva Program (BNDES)



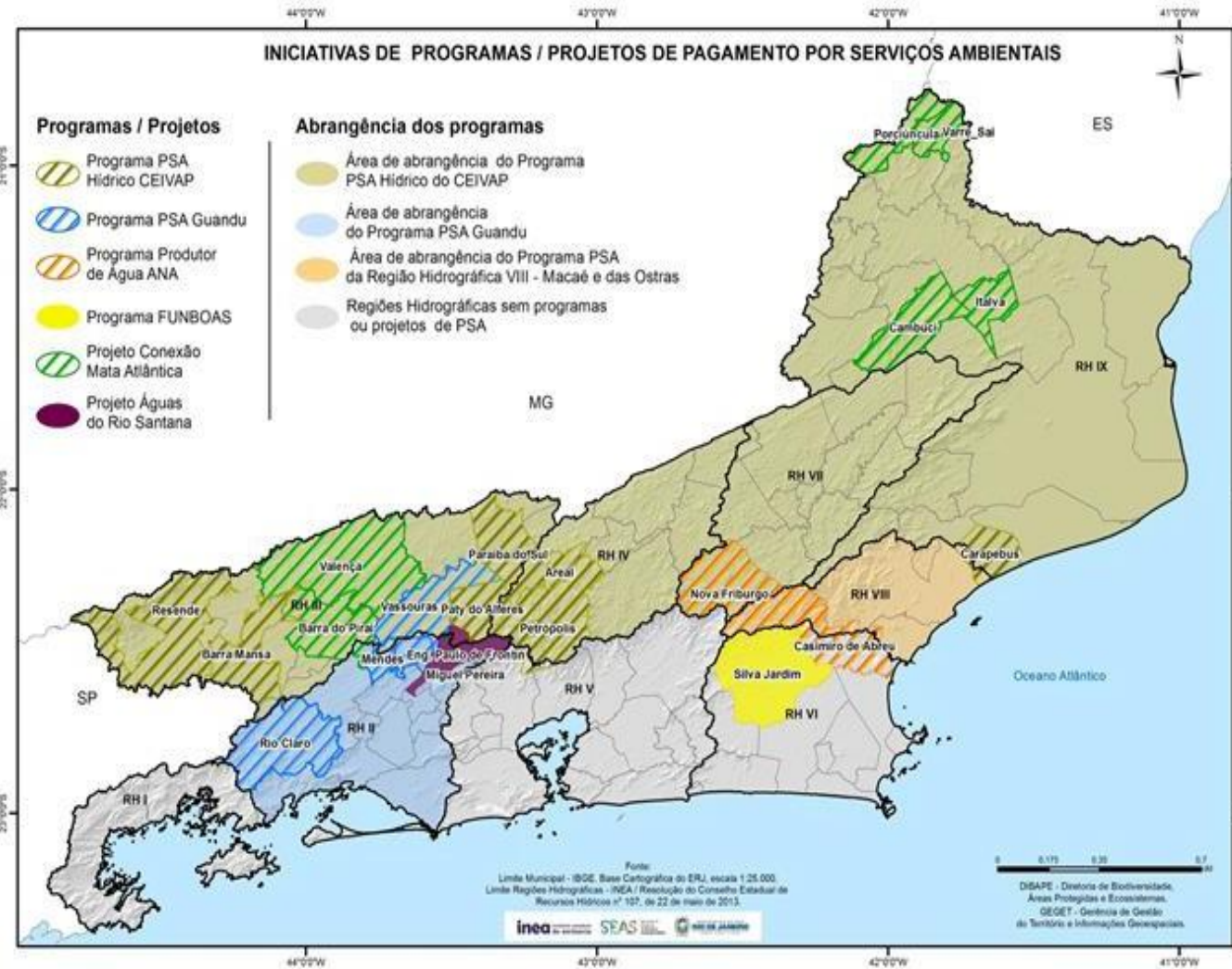
Saiba mais no portal!



Programa Estadual de PSA

PAYMENT FOR ENVIRONMENTAL SERVICES (PES)

Secretaria do Ambiente e Sustentabilidade



Dados de 2021

11 PES projects

22 beneficiary municipalities

USD 8,3 million invested



6.134 ha conservation



627 ha conversion



986 ha restoration



429 rural landowners





Conexão Mata Atlântica

In Brazil's Atlantic Forest, a Payment for Ecosystem Services model restores forests and livelihoods across Rio de Janeiro, São Paulo, and Minas Gerais – advancing conservation, restoration, and sustainable farming.

#ActionAgendaSolutions



In Rio de Janeiro alone, the project has channelled over R\$ 7.8 million (US\$ 1.4 million) since 2017.

- 1 2,680 ha restored or conserved across six municipalities.
- 2 280 producers rewarded for protecting forests and adopting sustainable practices.
- 3 Now evolving into Rio de Janeiro's first state-wide PES programme.



Discover more in the
COP30 Granary of Solutions

climatechampions.net/action-agenda/





**AMBIENTE
RESILIENTE**

Resilient Environment Project: Climate Adaptation of Cities in Rio de Janeiro State

Funding:



Execution:



ONU-HABITAT



**Urban Green Areas,
Sustainable Drainage**

Produtos:

NBS PILOTS – SUSTAINABLE DRAINAGE

Increase resilience to heavy rainfall through Nature-Based Solutions, promoting more green infrastructure across the State of Rio de Janeiro.

PILOT SPONGE CITIES

Demonstrate how to transform cities into systems capable of efficiently and sustainably absorbing, storing, and managing stormwater.

CLIMATE ACTION PLANS

Plan and prioritize adaptation, mitigation, and climate resilience actions at the municipal level.

Among others





Green and Resilient Guanabara: Inclusive and Resilient Cities through Nature-Based Solutions



Fundign: R\$ 3.1 million



Products:

- Legal framework, methodological roadmap, and training for the implementation of Nature-Based Solutions (targeting government, businesses, and communities)
- Financial mechanisms and funding sources
- Digital platform for Nature-Based Solutions



**Restoration and
Protection of
Water Sources**



**Sustainable
Agriculture
and Fisheries**



**Urban Green
Areas, Sustainable
Drainage, and
Phytoremediation**

DISCLOSURE AND TRANSPARENCY



RJ Biodiversity (ENGLISH)

<https://rjbiodiversity.inea.rj.gov.br/>



RJ Climate Change (ENGLISH)

<https://rjclimatechange.inea.rj.gov.br/>



RJ State Climate Change Portal

<http://mudancasdoclima.ambiente.rj.gov.br>



Resilient Environment Program

<http://ambientesresiliente.ambiente.rj.gov.br>



RJ State Biodiversity Portal:

<https://geoportal.inea.rj.gov.br/portal/apps/sites/#/portal-da-biodiversidade-do-estado-do-rio-de-janeiro>



RJ State Ecological Restoration Portal

<http://www.inea.rj.gov.br/portaldarestauracao>



Municipal Environment Management Portal

<https://geoportal.inea.rj.gov.br/portal/apps/sites/#/gestao-ambiental-municipal>



Rio de Janeiro State Municipal Protected Areas Support Program

<https://prouc.ambiente.rj.gov.br/>



Olho no Verde Portal

<https://www.inea.rj.gov.br/olho-no-verde/>



Olho no Verde Wildfire Monitoring Platform

<https://geoportal.inea.rj.gov.br/portal/apps/dashboards/d81ef84d5cb04ffcac7432bd81ae5e65>

Embargoed Areas Monitoring System

<https://www.inea.rj.gov.br/areas-embargadas/>



Conexão Mata Atlântica Project

<https://mataatlantica.inea.rj.gov.br>



Rio de Janeiro State PES Program

<https://www.inea.rj.gov.br/propsa>



Rio de Janeiro State Municipal Atlantic Forest Plans

<https://geoportal.inea.rj.gov.br/portal/apps/storymaps/stories/fc21d3b5451480ba0ed45615279219b>

THANKS!

Marie Ikemoto

Undersecretariat of Climate Change and
Biodiversity Conservation

Rio de Janeiro State Government

inea instituto estadual
do ambiente

Secretaria do
Ambiente e
Sustentabilidade



GOVERNO DO ESTADO
RIO DE JANEIRO